

# ANNEX 9

## TOWN OF LOS GATOS COMMUNITY WILDFIRE PROTECTION PLAN (CWPP)

### Organization and Jurisdiction

The Town of Los Gatos is located at the base of the Sierra Azul mountains in the southwestern portion of Santa Clara County, where the Santa Clara Valley meets the lower slopes of the Santa Cruz Mountains. Los Gatos encompasses a wide variety of terrain, ranging from flat topography at the edge of the valley floor to densely wooded hillsides. Both the valley and hillsides are interspersed with creeks, streams and riparian habitat. The sharp contrast between the valley floor and the hillsides provides the Town's picturesque background. The population is estimated to be 33,529 in a 14-square-mile area.

The Town of Los Gatos is governed by a publicly elected Town Council and has authority for General Plan land use planning, code adoption, and permit processing. The Town of Los Gatos does not have a Town fire department; Los Gatos is within the Central Fire Protection District. Fire protection services for Los Gatos are provided by Santa Clara County Central Fire Protection District (dba Santa Clara County Fire Department), including emergencies in State Responsibility Areas (SRAs) in unincorporated areas of the wildland urban interface (WUI), adjacent to Los Gatos.

State law designates all lands within the Town limits of Los Gatos as a Local Responsibility Area (LRA) for purposes of wildland fire protection. Most State fire prevention and defensible space laws do not apply within LRAs. Recent legislation requires State review and input on General Plan Safety Element updates where wildland fire is a hazard (Government Code Section 65040.20).

### Planning Team Participation

The Los Gatos community is represented on the Core Team by representatives of the Santa Clara County Fire Department, Santa Clara County Firesafe Council, the Town's Parks and Public Works and Community Development Departments, and the Town Manager's Office. The community has been engaged in the Community Wildfire Protection Plan (CWPP) planning process through two rounds of meetings held in 2022 and 2023.

### Risk-Hazard Summary

Community hazard assessments include ratings of community conditions compared to best practices for WUI fire mitigation. Community hazard ratings include consideration of applicable State codes, local ordinances, and recognized best practices guidelines.

The National Fire Protection Association Standard 1144 (NFPA 1144) defines WUI hazards and risks at the community and parcel level. This plan utilizes components of NFPA 1144, California laws and local ordinances to evaluate neighborhood WUI hazard and risk. California Public Resource Code (PRC) 4290 and 4291 sections address best practices WUI community design and defensible space standards.

The NFPA 1144 community risk assessment completed for the Los Gatos Hills Community assigned the WUI community a risk rating of High with a score of 89 (<40= low, >40 = moderate, >70 = High, >112 = Extreme) see tabulated list below. Factors that contributed to the risk are illustrated below. Averages are taken across the community for each of these parameters.

In addition to the on-the-ground hazard assessment, the CWPP also includes a Composite Fire Risk/Hazard Assessment, which uses fire behavior modelling to determine potential fire behavior and is based on fuel characteristics, topography, weather, and fire history. The Composite Risk/Hazard Assessment for the planning area is shown in Figure 9.5. For more information on the methodology for this assessment please refer to Chapter 3 of the [County of Santa Clara CWPP](#). For mapping on Wildfire risk to homes, likelihood, exposure, and vulnerable populations visit the following link: <https://wildfirerisk.org/explore/overview/06/06085/0600044112/>.

## WUI Area Description

### WUI Area Defined

The Los Gatos WUI planning area includes primarily Very High Fire Hazard Severity Zone areas on the southern side of Los Gatos (Figure 9.1). The WUI area is best described as a wildland-urban intermix with homes scattered amongst wildland fuels.

### Fire History

For fire history information, please see Figure 2.9 in the main [County of Santa Clara CWPP](#) document.

### Hazardous Fuel Characteristics

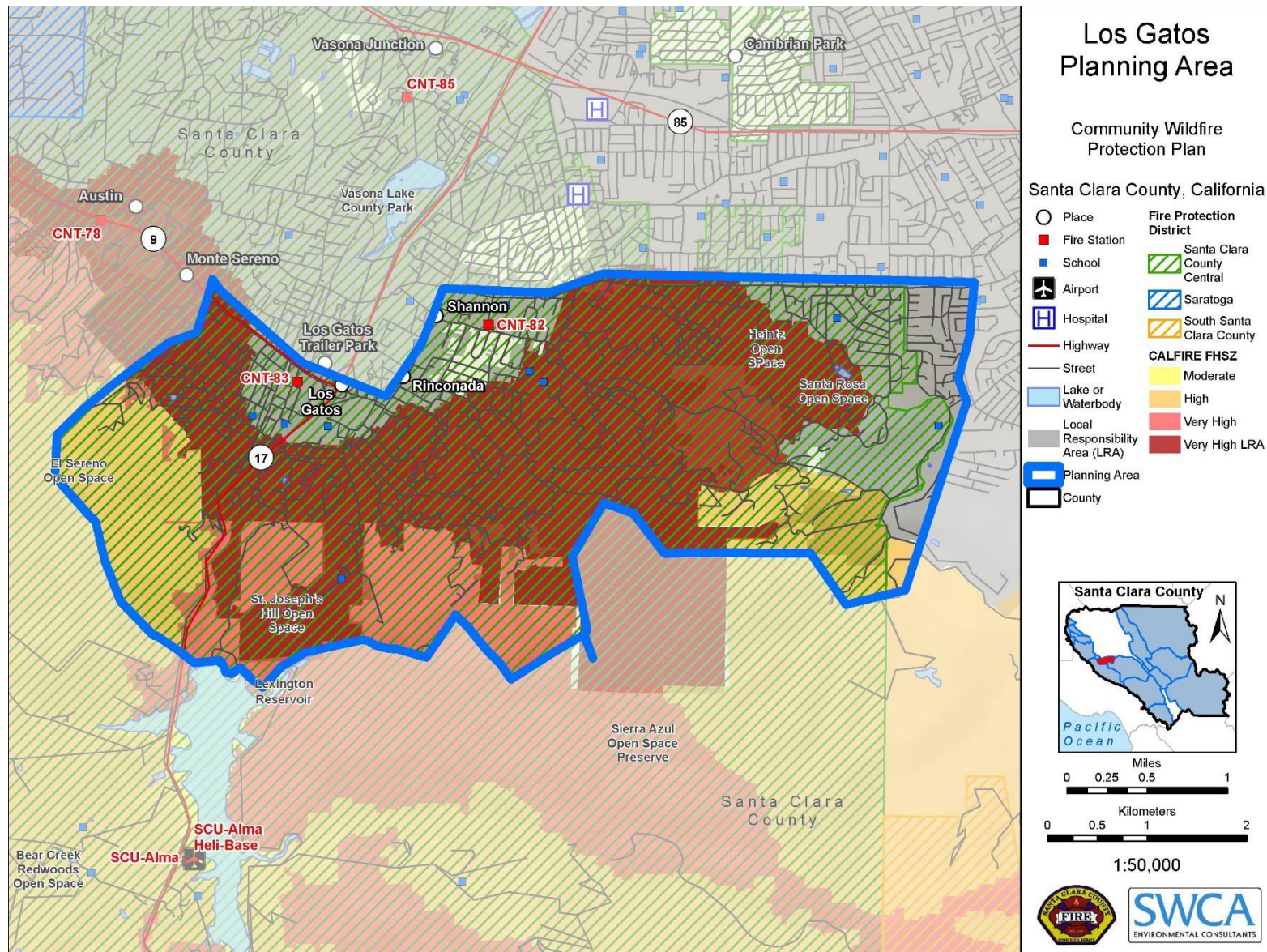
The Los Gatos planning area comprises a range of vegetation communities that differ depending upon elevation, precipitation, and slope. Chaparral vegetation is often found on south facing slopes, where winter precipitation is relatively high, but dry summers are common. The chaparral will have long flame lengths under either moderate or extreme weather scenarios. The nature of these fuels is to burn quickly and intensely. Oak woodlands comprised of a variety of oak species are also interspersed throughout as well as mixed conifer comprising knob cone pine and grey pine. A fire in either the mixed conifer or hardwood would likely be a surface fire with patches of active behavior and low rates of spread. However, active fire behavior is possible in this vegetation type under extreme weather conditions, especially where there is high surface loading. Coastal coniferous forest communities such as redwoods and Douglas fir are located at lower elevations where precipitation is high, fog is common, and temperatures are moderate. Fire spread is generally limited in this fuel type; however, given the right combination of weather conditions, surface fire can be expected to burn uphill. Areas with increased fuel loading from dead and down materials may experience crowning under the right conditions. The varied vegetation composition result in the Los Gatos WUI comprising a range of wildfire hazards.

**Photo of Chaparral vegetation**





*Santa Clara County Community Wildfire Protection Plan  
Town of Los Gatos*



**Figure 9.1. Los Gatos planning area.**

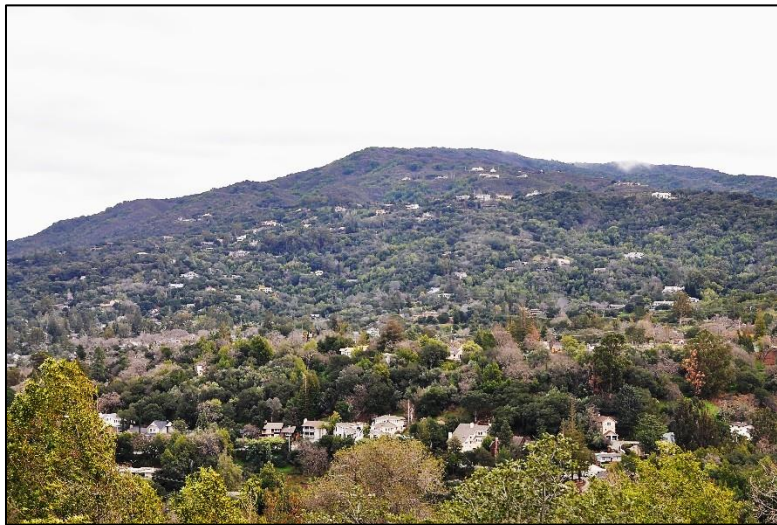


## Neighborhood and Structural Characteristics

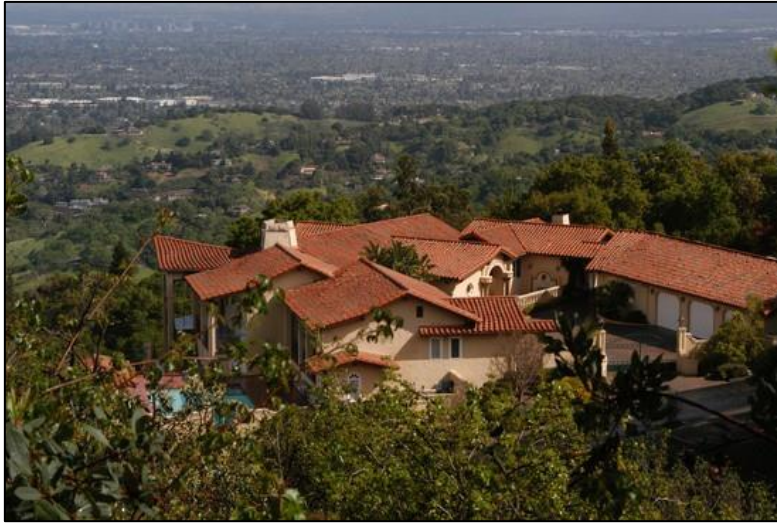
The foothills above Los Gatos (shown in Figure 9.2 below) are characterized by steep, winding, and narrow roads that pose potentially difficult ingress and egress during events requiring emergency response and evacuations. Some areas may experience slow response times due to the distance from the nearest fire station and existing road conditions. Some homes have minimal turnaround space, posing a concern to emergency responders due to potential entrapment. There are several dead-end roads and narrow driveways.

Most homes have moderate defensible space (at least 30 feet) but some homes do not meet the necessary 70- to 100-foot space. Homes are inspected by Santa Clara County Fire Department (SCCFD) personnel at least every three years. Most homes have non-combustible siding, but the majority have combustible decks and fencing that abuts directly next to wildland fuels. Some homes have wood shake roofs which put the property and neighborhood at risk. Many subdivisions are managed by homeowner associations (HOAs), which provide a conduit for fire prevention and public education and outreach messages regarding structural ignitability and defensible space. Many 7A compliant new build properties (Figure 9.3) are interspersed with older properties, many are on large lots with good separation and have well maintained yards. Many homes are landscaped by contracted landscape companies; outreach regarding defensible space and non-flammable landscape vegetation could be targeted at those companies. Vulnerable populations, such as retirement homes, are a concern to law enforcement and fire department personnel, due to evacuation concerns along narrow roads. Defensible space in these areas is a priority, particularly where vegetation is close to the property (Figure 9.4).

Many homes are located upslope from thick scrub fuels, with continuous canopies. Homes are located on steep slopes with often minimal set-back from the slope. Topography is a concern due to the influence steep slopes have on potential fire behavior.



**Figure 9.2. Overview of Los Gatos WUI community.**



**Figure 9.3. New build property, built to 7A compliance.**



**Figure 9.4. Eucalyptus close to units in a former retirement community in hills above Los Gatos.**

## Emergency Response Capacity

### Fire Response

Fire suppression for the Los Gatos WUI area is provided by:

- Santa Clara County Central Fire Protection District:
  - Los Gatos Fire Station, 306 University Ave, Los Gatos
  - Shannon Fire Station, 16565 Shannon Rd, Los Gatos
  - Winchester Fire Station, 14850 Winchester Blvd, Los Gatos

## Public Education and Outreach Programs

Santa Clara County Fire Department, Fire Prevention Division provides a comprehensive fire and life safety educational program within Los Gatos. More information can be found on its website:

<http://www.sccfd.org/community-education/overview>.

The Santa Clara County Fire Safe Council is actively involved in the Town of Los Gatos and surrounding communities (<https://sccfiresafe.org/>). This organization provides information regarding chipping programs, defensible space mitigation, forest health issues, and much more. They also offer public meetings and forums to support wildfire awareness.

The Town of Los Gatos provides comprehensive emergency preparedness information on its website: <https://www.losgatosca.gov/2026/Emergency-Preparedness>. In addition, the Town has an active CERT program: <http://www.town.los-gatos.ca.us/152/CERT-Emergency-Management>.

## Social Vulnerabilities

The Town has a large senior population, some individuals with disabilities, and some with low income and language barriers. The Town of Los Gatos will outreach to these communities to provide education and awareness on disaster preparedness. The 55 Plus program maintains a list of senior living communities in Los Gatos and other senior services that can be found here: <https://www.lgsrecreation.org/55-plus/hub/>.

Los Gatos, CA, has a population of more than 25,000 and does not meet the population criteria for the Slip-On Tanker program, which can be used by local governments to purchase slip-on tanker units that allow trucks and other vehicles to be operated as wildland fire engines. Local governments that provide emergency services to areas with a population of 25,000 or less are eligible to apply.

## Policies, Regulations, Ordinances, and Codes

Buildings within the Town of Los Gatos would be subject to the Municipal Code of Los Gatos. Chapter 9 Fire Protection and Prevention outlines codes and ordinances pertaining to wildfire: [https://library.municode.com/ca/los\\_gatos/codes/code\\_of\\_ordinances?nodeId=CO\\_CH9FIPRPR](https://library.municode.com/ca/los_gatos/codes/code_of_ordinances?nodeId=CO_CH9FIPRPR).

California Fire Code Section 4907.1 states, "Defensible space will be managed around all buildings and structures in State Responsibility Areas (SRA) as required in Public Resources Code 4291."

In addition, buildings and structures within the Very High Fire Hazard Severity Zones of an LRA shall maintain defensible space as outlined in Government Code 51175 - 51189 and any local ordinance of the authority having jurisdiction.

Refer to Chapter 49 of the California Fire Code as amended and adopted by the Town of Los Gatos for all of the requirements for Wildland Urban Interface Fire Areas in the Town. Refer to Section 9 of the Town Code for more information.

## Risk-Hazard Assessment

As mentioned in the Risk Hazard Summary, the NFPA 1144 community risk assessment completed for the Los Gatos Hills Community assigned the WUI community a risk rating of High with a score of 89 (<40= low, >40 = moderate, >70 = High, >112 = Extreme) see tabulated list below. Factors that contributed to the risk are illustrated below. Averages are taken across the community for each of these parameters.

Los Gatos

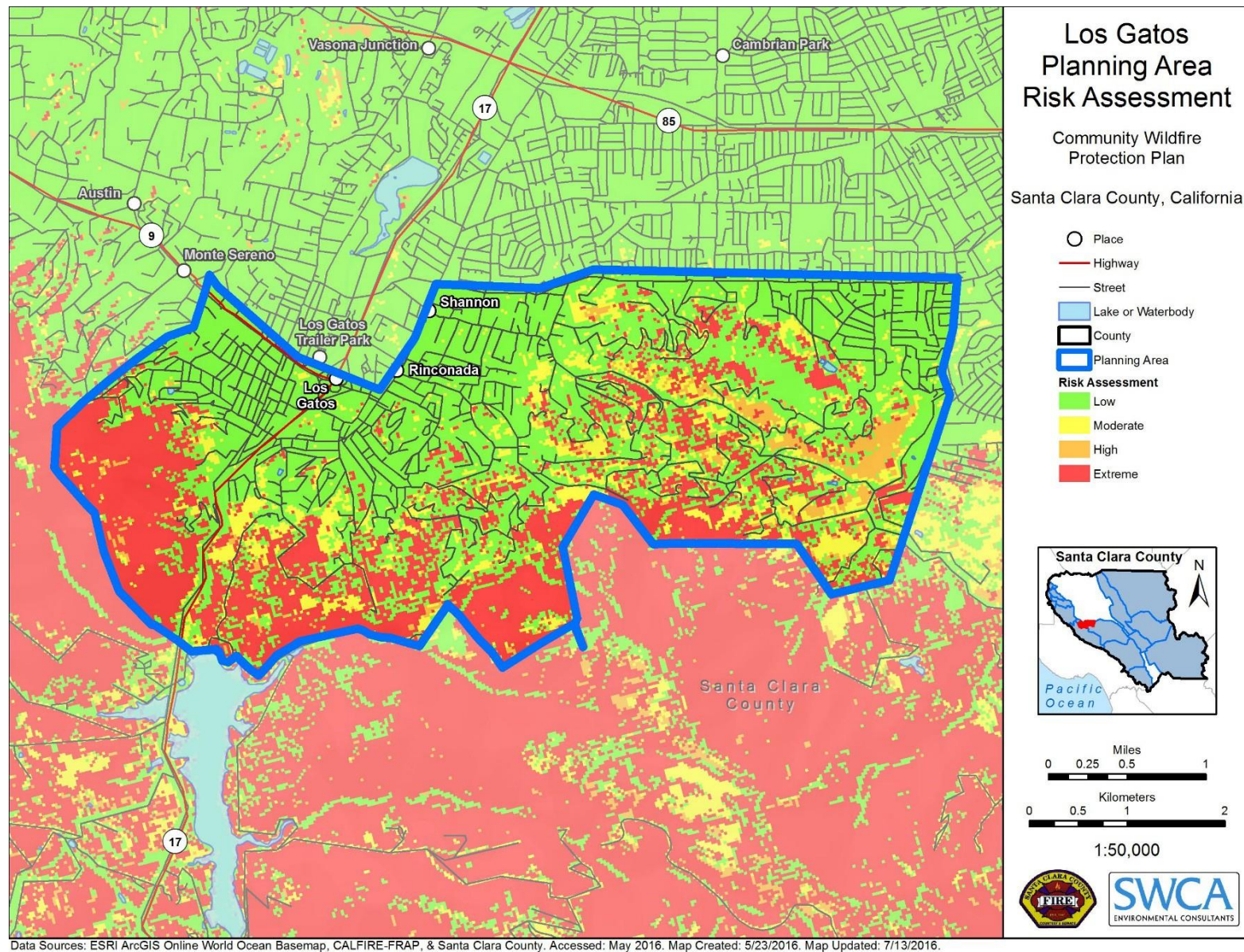
Parameter	Condition	Rating
Access	Two roads in and out but access still concern	+/-
	Narrow road width	-
	Surfaced road with greater than 5% grade	+
	Poor fire access, dead end spurs, lack turnaround	-
	Street signs are present, some are non-reflective	+/-
Vegetation	Adjacent fuels: Medium	+/-
	Defensible space: >30 feet < 70 feet around structure	+/-
Topography within 300 feet of structure	21%–30%	-
Topographic features	Moderate to high concern	+/-
History of high fire occurrence	Low	+
Severe fire weather potential	Low	+
Separation of adjacent structures	Good separation	+
Roofing assembly	Class C	-
Building construction	Combustible siding and deck	-
	Building set back <30 feet to slope	-
Available fire protection	Water: hydrants present with variable pressure	+
	Response: Station <5 miles from structure	+
	Internal sprinklers: some newer 7A compliant homes	+/-
Utilities	One above and one below ground	+/-
<b>Risk Rating- High (89)</b>		

In addition to the on-the-ground hazard assessment, the CWPP also includes a Composite Fire Risk/Hazard Assessment, which uses fire behavior modelling to determine potential fire behavior and is based on fuel characteristics, topography, weather, and fire history. The Composite Risk/Hazard Assessment for the planning area is shown in Figure 9.5. For more information on the methodology for this assessment please refer to Chapter 3 of the [countywide CWPP](#).

## PARCEL LEVEL ASSESSMENT

A model for determining parcel level risk and effect of mitigations has been developed through this CWPP project. The model can use information available through public record for basic analysis but can be further refined with a site visit with property owner for a thorough analysis of risk score. The County will be seeking funding to fully implement this parcel level assessment in the future. The goal is for the property owner to be able to use this analysis to determine the most effective steps they can take to reduce their risk. For more information refer to Chapter 3 in the [countywide CWPP](#).





**Figure 9.5. Composite Risk and Hazard Assessment for Los Gatos WUI community.**

## CALFIRE Fire Hazard Severity Zones

The CALFIRE Fire Hazard Severity Zones (FHSZ) system is a science-based system where severity zones are defined based on vegetation, topography, and weather (temperature, humidity, and wind), and represent the likelihood of an area burning over a 30- to 50-year time period without considering modifications such as fuel reduction efforts. The CALFIRE FHSZ maps present wildfire hazard and not wildfire risk. Wildfire risk takes building construction materials, vegetation management projects, distance to fire station and water supply into account. In California, CAL FIRE maintains FHSZ data for the entire State. There are three classes of fire hazard severity ratings within FHSZs: Moderate, High, and Very High (CA GOPR 2020).

## Critical Infrastructure and Community Values at Risk

Critical utility infrastructure such as, electric power supply lines, substations, and natural gas lines are essential to supply services to residents and businesses that are in some cases are critical to health and life safety. In many parts of the project area, electric power is needed to operate pumps for domestic water supply, and to provide heating and lighting. Wildfire is a significant threat to the electric utility supply.

The project area has several watersheds that contain infrastructure and vegetation which can both impact water distribution and quality when exposed to a wildland fire. Watersheds need to be maintained and protected from catastrophic wildfire damage to prevent erosion, sedimentation and water contamination (Taylor et al. 1993). Long-term issues that could result from damage to watersheds include increased run off, poor soil retention, and decreased water quality.

The WUI area surrounding Los Gatos is comprised of open space areas, including El Sereno Open Space, St. Josephs Hill Open Space, Heintz Open Space, Sierra Azul Open Space, and Santa Rosa Open Space. These open space areas are valued both for their natural resources and for the recreational opportunities they provide.

In addition to open space areas, other community assets at risk from possible wildfire include: life safety, homes and property values, infrastructure, recreation and lifestyle, wildlife habitat, watershed protection, environmental resources, and commercial business. For example, a number of wineries/vineyards are located within the WUI, including the Testarossa Winery, McCarthy Family Estate Vineyards, La Rusticana D'Orsa Vineyard, and Perrucci Family Vineyard. See Town of Los Gatos critical infrastructure in the link below can be copied and pasted in your browser to view the Town of Los Gatos critical infrastructure: [https://www.losgatosca.gov/DocumentCenter/View/31982/6-LGGP\\_2040\\_Public-Facilities-Services-and-Infrastructure-Element](https://www.losgatosca.gov/DocumentCenter/View/31982/6-LGGP_2040_Public-Facilities-Services-and-Infrastructure-Element).

## Mitigation Projects and Prioritizations

Los Gatos started a Roadside Vegetation Management project with Town funds in 2020 and in 2021. Work completed through the program resulted in the removal of vegetation along Priority 1 and Priority 2 roads as identified in the Vegetation Management Plan that can be found at: <https://www.losgatosca.gov/2620/Vegetation-Management>.

The next phases of work will be undertaken in 2024, with the full 31 miles of priority 1 and 2 roadways expected to be completed by the end of 2025. Vegetation removal completed under this program is designed to provide a clear width of 20 feet and a clear height of 13.5 feet. The work will be funded by a USDA grant supplemented by Town matching funds. This is the same funding that was used to remove 18 eucalyptus trees on Overlook Road.

Table 1- 1. Recommended Projects for Creating Resilient Landscapes (Fuel Reduction Projects) in Town of Los Gatos planning area.

Project ID	Status	Priority (H,M,L)	Timeline for Action	Project Description	Location	Land Ownership/ Lead Agency	Methodology/Approach	Serves To:	Monitoring/Maintenance Requirements	Funding Sources
LG.FR.1	Ongoing	H	Ongoing	Identify needed road maintenance and strategic road buffers	Highest risk roadways as identified in the risk assessment for access ingress and egress in the WUI.	County Fire, Cal Fire, FireSafe Council, and Town of Los Gatos	<u>Roadway improvements:</u> <ul style="list-style-type: none"><li>While increasing roadway width may not be feasible in many locations, creation of passing areas where possible should be prioritized</li><li>Grade and maintain roads to reduce hazards to emergency apparatus (potholes and poor surfacing)</li></ul> <u>Road ROW vegetation improvements:</u> <ul style="list-style-type: none"><li>Frequent maintenance of ROW</li><li>Treat surface fuels for a minimum of 10 ft buffer and up to 30ft where possible</li><li>Trim fuels (limbing-up timber) to allow safe passage of emergency vehicles</li><li>Control for invasive species that may contribute to rapid fire spread (i.e., weeds and grasses).</li><li>Conduct assessment of evacuation route that have limited egress</li></ul>	Provides for safe and effective wildfire response capabilities  Creates a strategic fuel break along roadways to create potential firebreak  And improve evacuation routes.	Regular maintenance needed to ensure the roads are drivable for emergency response vehicles	<ul style="list-style-type: none"><li>Grants (FEMA, Ca FireSafe Council, U.S. Forest Service and Cal Fire) and PPW (Town Parks and Public Works) budget</li></ul>
LG.FR.2	Ongoing	H	Ongoing	Improve and maintain existing fuel breaks and potential fire containment features. Define and delineate safe refuge areas.	Highest risk areas as identified in the risk assessment:	County, State, Federal	Strategic placement of fuel breaks will help to limit the spread of wildland fire and increase access to difficult areas. Fuel break prescriptions should be site specific depending on the fuel type, topography, soils, adjacent land management practices and environmental regulations (NEPA/CEQA). The prescriptions will incorporate the use of best management practices for habitat protection (i.e., protection of vulnerable species and habitat and prevention of invasive species). <ul style="list-style-type: none"><li>Look for opportunities to develop and/or increase fire breaks to double as access within the WUI or difficult to access areas and look for opportunities to widen some public trails to better serve as fuel breaks/fire access roads on lands adjacent to WUI.</li><li>Encourage clearance of an additional width when possible.</li><li>Create additional buffer zones between existing development and the forest, ensuring fire suppression access. Maintain existing fire breaks and buffers (<i>Figure X will be a map of existing and planned fuel treatments</i>).</li><li>Work with adjacent landowners to develop internal capacity to help enhance fire access-through road and trail improvements on those lands</li><li>Identify Safety zones in case egress is limited</li></ul>	Protect life and property by mitigating fuels, providing defensible space for firefighters protecting structures.  Create a fuel arrangement unlikely to support crown fire  Ensure the protection of vulnerable ecosystems and values at risk.  Protect life for evacuees in case egress is limited	Regular maintenance needed to ensure the fuel break remains clear of vegetation.  Monitor for invasive species.  Continued management of fire breaks maintained by grazing, brush breaking, controlled burns.  Identification and continued maintenance of safety zones	<ul style="list-style-type: none"><li>Grants (FEMA, Ca FireSafe Council, U.S. Forest Service and Cal Fire) and PPW budget</li></ul>
LG.FR.3	Ongoing	H	Ongoing	Fire Safe Council to continue community outreach to prioritize treatments along existing trails that could help to provide a more substantial fuel break and break up the continuity of fuels.	Trails that run adjacent to the Community	Open Space Lands Owner	Detailed analysis would be needed in development of treatment location to ensure protection of natural resources.	Provide access when fires occur to reduce spread  Enhance Community fire defense by breaking up fuel continuity	Regular maintenance needed to ensure the fuel breaks remain clear of vegetation.	Grants: CA FSC; California Forest Improvement Program (CFIP); Natural Resource Conservation Service (NRCS), FEMA, Green House Gas Reduction Fund (GHGRF)



Santa Clara County Community Wildfire Protection Plan  
Annex 9 – Town of Los Gatos

Project ID	Status	Priority (H,M,L)	Timeline for Action	Project Description	Location	Land Ownership/ Lead Agency	Methodology/Approach	Serves To:	Monitoring/Maintenance Requirements	Funding Sources
LG.FR.4	Ongoing	H	Ongoing	Continue roadside brushing/mowing throughout community to increase buffer from wildfire ignitions and provide for safe evacuation.  Establish assistance program for hazardous fuel reduction and defensible space for elderly or physically challenged individuals within Los Gatos	Town of Los Gatos roads, Los Gatos neighborhood groups, HOAs in the WUI	Town of Los Gatos PPW, private road associations, PG&E, Cable and Phone companies.  Led by SCCFSC.	Determine suite of treatment methods allowed and restriction for roadside hazard reduction including mowing, mastication, chemical, plantings, mulching, etc. Develop treatment plan and rotation schedule for roadside treatments, focusing of primary evacuation or access/egress corridors. Identify barriers to achieving parcel level defensible space and establish assistance program of resources: education, consulting, guidance, people, funding.	Reduce fuel loading around roads and highways to ensure safe passage of vehicles in event of evacuation and reduce unplanned ignitions from vehicles and highway users Ensure that individual properties with poor property hygiene do not put adjoining properties at risk in event of wildfire. For residents who are not capable of implementing good property hygiene	Regular maintenance schedule should be implemented to ensure clearance levels are maintained. Develop standards for road crews.  Establish levels of participation by assistance type,	Grants: Federal Emergency Management Agency (FEMA), California Fire Safe Council (CA FSC), Department of Homeland Security (DHS), NRCS, GHGRF
LG.FR.5	Ongoing	H	Ongoing	Create Sustainable programs for creating Defensible Space at the parcel Level within Los Gatos	Town of Los Gatos residents in the WUI	Homeowner, FireSafe Councils, Homeowner Associations, SCCFD, Administrators for SRA fee distributions.	Example projects - Curbside green waste pickup programs, community chipping piles, drive-up chipping, on site chipping.	Ensure that defensible space actions are sustained in all communities	Regular maintenance schedule should be implemented to ensure clearance levels are maintained.	Grants: CA FSC; CFIP; NRCS, FEMA, GHGRF
LG.FR.6	Not Started	H		Identify all wood shake-roofed properties within planning area and target homeowners with outreach on retrofitting roofs.	Homes in the WUI	Town of Los Gatos Community Development Department in conjunction with County Fire	Survey homes in the WUI.	Create a database of wood shake roofs and explore elimination of flammable roofs through attrition or potential Town Code modification	Update list annually.	NA
LG.FR.7	Annual	H	Annual	Participate in an annual community workday to encourage yard clean-up and defensible space maintenance	Homes in the WUI	County Fire, CAL FIRE, FireSafe Council and the Town.				

Table 1-2. Recommended Projects for Creating Fire Adapted Communities (Public Education and Outreach and Structural Ignitability Projects) in Town of Los Gatos planning area

Project ID	Status	Priority (H,M,L)	Timeline for Action	Project Description	Location	Land Ownership/ Lead Agency	Methodology/Approach	Serves To:	Monitoring/Maintenance Requirements	Funding Sources
LG.EO.1	Ongoing	H	Ongoing	Identify vulnerable populations located in the WUI	Prioritize high risk areas	Fire Department, HOA's, community leaders	<ul style="list-style-type: none"><li>The County needs to identify vulnerable populations (elderly, disabled, low income) who may need additional help to mitigate home hazards and to evacuate during a wildfire.</li><li>Seek grant opportunities to support assistance for vulnerable populations.</li></ul>	Protect life and property of the most vulnerable members of the community.	Annual review of number of actions taken to address vulnerable populations	
LG.EO.2	Ongoing	M	Ongoing	Identify priority ignition concerns.	Extreme threat areas:	Public agencies, Fire Department, Department of Emergency Management	Utilize fire history data to identify areas with frequent fire starts and develop strategy to reduce incidence of ignitions. Convene a working group to develop strategies to reduce human starts: <ul style="list-style-type: none"><li>Education campaign</li><li>Signage</li><li>Fire response plans</li><li>Law enforcement</li></ul>	Reduce unnecessary ignition through unlawful or irresponsible behavior.	Annual evaluation of priority ignition concerns. 5-year re-run of risk assessment to determine success in mitigating hazards. Review fire history data on a 2-year frequency to monitor trends.	
LG.EO.3	New	M	2024	Designate a member to the Countywide CWPP Core Team for CWPP updates.	NA	Town of Los Gatos	PPW Wildfire Mitigation Projects Manager to participate in the working group and identify tasks and goals for CWPP updates.	Represent the Town of Los Gatos	Commit to attendance to CWPP meeting annually.	PPW
LG.EO.4	New	M	2025/2026	Develop methods for sustainability of hazardous fuel reduction and collaborate with the SCCFSC on a data collection method for past and current vegetation management projects.	Town of Los Gatos WUI	PPW	Develop options for Town Council to evaluate sustainable hazardous fuel maintenance funding and prioritize projects.	Coordinate data collection of current and past vegetation management projects	Update when new projects have been completed	PPW
LG.EO.5	Ongoing	M	Ongoing	Continue to disseminate information that provides fire safety information, fire announcements, and emergency planning.	Town of Los Gatos	Town Manager's Office and PPW.	Content to be provided by fire departments, local residents, Santa Clara County FireSafe Council and the Town.	Protect communities and infrastructure through increasing public awareness and providing medium for information regarding emergency fire response.	Participate in Town meetings, special events and fairs.	Grants and Town General Funds

Table 1-3. Recommended Projects for Safe and Effective Wildfire Response (Fire Fighting Capability Projects) in Town of Los Gatos planning area

Project ID	Status	Priority (H,M,L)	Timeline for Action	Project Description	Location	Land Ownership/ Lead Agency	Methodology/Approach	Serves To:	Monitoring/Maintenance Requirements	Funding Sources
LG.FC.1	New	M	1-5 years	Develop a coordinated approach between the fire department and water district to identify needed improvements to the water distribution system, initially focusing on areas of highest wildfire hazard as determined in the risk assessment and areas with limited water pressure or no existing water supply.	Priority areas	Fire Department, Local Community Organizations and Water Purveyors	-Initiate a detailed study of feasible locations for water development improvements. -Install hand pumps or other methods independent of the grid for accessing private well water. Evaluate and consider Heli Hydrants through the interface	Improve fire-fighting response if water is more readily available or closest locations could be identified on a GIS map on a tablet/computer.  Alleviates public and agency concern for limited water supply in some WUI areas	Convene annually Document number of meetings held Document number of actions taken	Water Purveyors and Fire Department
LG.FC.2	Ongoing	H		Develop strategies to enhance safe wildfire response in areas with poor ingress and egress.	Priority areas	Fire Department	-Address narrow access concerns for wildfire apparatus through road improvements, new egress points, or development of response plans. -Identify alternative apparatus for access into narrow areas. -Identify potential areas that threaten entrapment of response crews and develop response plans and/or safety zones. -Map all weak bridges and develop alternative ingress/egress or response plan. -Identify areas with limited all-weather access and develop response plan. -Work with HOAs and Community Associations to address locked gates and access concerns	Improve fire-fighting response if smaller more agile vehicles are available to navigate narrow unimproved roads	NA	