

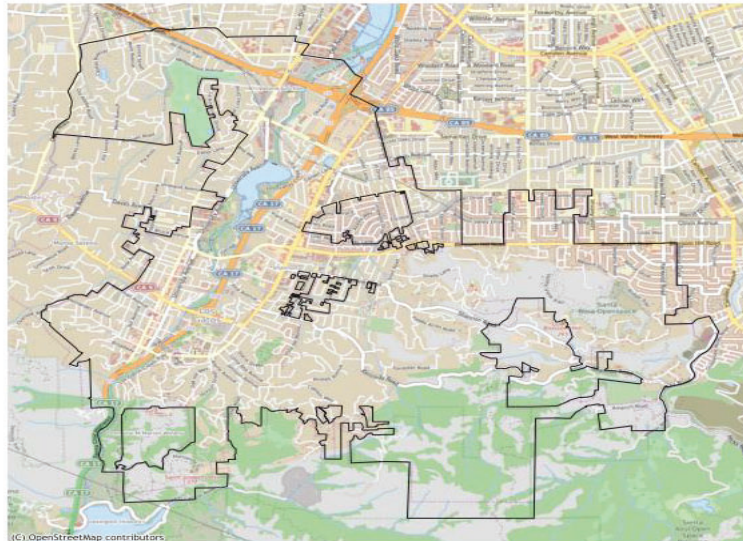
AFFH Segregation Report Los Gatos



AFFH SEGREGATION REPORT: LOS GATOS

UC Merced Urban Policy Lab and ABAG/MTC Staff

Version of Record: March 06, 15:57:57



ASSOCIATION OF BAY AREA GOVERNMENTS
METROPOLITAN TRANSPORTATION COMMISSION



Technical Assistance
for Local Planning
HOUSING

0.1 Table of content

0.1	Table of content	2
0.2	List of figures	3
0.3	List of tables	3
1	Introduction	4
1.1	Purpose of this Report	4
1.2	Defining Segregation	5
1.3	Segregation Patterns in the Bay Area	5
1.4	Segregation and Land Use	6
2	Racial Segregation in Town of Los Gatos	8
2.1	Neighborhood Level Racial Segregation (within Town of Los Gatos)	8
2.2	Regional Racial Segregation (between Los Gatos and other jurisdictions)	16
3	Income Segregation in Town of Los Gatos	21
3.1	Neighborhood Level Income Segregation (within Los Gatos)	21
3.2	Regional Income Segregation (between Los Gatos and other jurisdictions)	27
4	Appendix 1: Summary of Findings	31
4.1	Segregation in Town of Los Gatos	31
4.2	Segregation Between Town of Los Gatos and Other jurisdictions in the Bay Area Region	31
5	Appendix 2: Segregation Data	33
6	References	37



0.2 List of figures

Figure 1: Racial Dot Map of Los Gatos (2020).....	9
Figure 2: Racial Isolation Index Values for Los Gatos Compared to Other Bay Area Jurisdictions (2020)	11
Figure 3: Racial Dissimilarity Index Values for Los Gatos Compared to Other Bay Area Jurisdictions (2020) ..	14
Figure 4: Theil's H Index Values for Racial Segregation in Los Gatos Compared to Other Bay Area Jurisdictions (2020)	15
Figure 5: Racial Dot Map of Los Gatos and Surrounding Areas (2020)	16
Figure 6: Racial Demographics of Los Gatos Compared to All Bay Area Jurisdictions (2020)	18
Figure 7: Comparing the Share of People of Color in Los Gatos and Vicinity to the Bay Area (2020)	19
Figure 8: Income Dot Map of Los Gatos (2015)	22
Figure 9: Income Group Isolation Index Values for Los Gatos Compared to Other Bay Area Jurisdictions (2015)	24
Figure 10: Income Group Dissimilarity Index Values for Los Gatos Compared to Other Bay Area Jurisdictions (2015)	26
Figure 11: Income Group Theil's H Index Values for Los Gatos Compared to Other Bay Area Jurisdictions (2015)	27
Figure 12: Income Dot Map of Los Gatos and Surrounding Areas (2015).....	28
Figure 13: Income Demographics of Los Gatos Compared to Other Bay Area Jurisdictions (2015).....	29

0.3 List of tables

Table 1: Racial Isolation Index Values for Segregation within Los Gatos.....	10
Table 2: Racial Dissimilarity Index Values for Segregation within Los Gatos	13
Table 3: Theil's H Index Values for Racial Segregation within Los Gatos	15
Table 4: Population by Racial Group, Los Gatos and the Region	17
Table 5: Regional Racial Segregation Measures	20
Table 6: Income Group Isolation Index Values for Segregation within Los Gatos	23
Table 7: Income Group Dissimilarity Index Values for Segregation within Los Gatos	25
Table 8: Theil's H Index Values for Income Segregation within Los Gatos.....	26
Table 9: Population by Income Group, Los Gatos and the Region.....	28
Table 10: Regional Income Segregation Measures	30
Table 11: Neighborhood Racial Segregation Levels in Los Gatos	33
Table 12: Neighborhood Income Segregation Levels in Los Gatos.....	34
Table 13: Regional Racial Segregation Measures.....	35
Table 14: Regional Income Segregation Measures	35
Table 15: Population by Racial Group, Los Gatos and the Region.....	36
Table 16: Population by Income Group, Los Gatos and the Region	36

1 INTRODUCTION

The requirement to Affirmatively Further Fair Housing (AFFH) is derived from The Fair Housing Act of 1968, which prohibited discrimination concerning the sale, rental, and financing of housing based on race, color, religion, national origin, or sex—and was later amended to include familial status and disability.¹ The 2015 U.S. Department of Housing and Urban Development (HUD) Rule to Affirmatively Further Fair Housing and California Assembly Bill 686 (2018) mandate that each jurisdiction takes meaningful action to address significant disparities in housing needs and access to opportunity.²³ AB 686 requires that jurisdictions incorporate AFFH into their Housing Elements, which includes inclusive community participation, an assessment of fair housing, a site inventory reflective of AFFH, and the development of goals, policies, and programs to meaningfully address local fair housing issues. ABAG and UC Merced have prepared this report to assist Bay Area jurisdictions with the Assessment of Fair Housing section of the Housing Element.

Assessment of Fair Housing Components

The Assessment of Fair Housing includes five components, which are discussed in detail on pages 22-43 of [HCD's AFFH Guidance Memo](#):

- A: Summary of fair housing enforcement and outreach capacity
- B: Integration and segregation patterns, and trends related to people with protected characteristics
- C: Racially or ethnically concentrated areas of poverty
- D: Disparities in access to opportunity
- E: Disproportionate housing needs, including displacement risk

1.1 Purpose of this Report

This report describes racial and income segregation in Bay Area jurisdictions. Local jurisdiction staff can use the information in this report to help fulfill a portion of the second component of the Assessment of Fair Housing, which requires analysis of integration and segregation patterns and trends related to people with protected characteristics and lower incomes. Jurisdictions will still need to perform a similar analysis for familial status and populations with disability.

This report provides segregation measures for both the local jurisdiction and the region using several indices. For segregation between neighborhoods within a city (intra-city segregation), this report includes isolation indices, dissimilarity indices, and Theil's-H index. The isolation index measures

¹ <https://www.justice.gov/crt/fair-housing-act-2>

² HCD AFFH Guidance Memo

³ The 2015 HUD rule was reversed in 2020 and partially reinstated in 2021.



segregation for a single group, while the dissimilarity index measures segregation between two groups. The Theil's H-Index can be used to measure segregation between all racial or income groups across the city at once. HCD's AFFH guidelines require local jurisdictions to include isolation indices and dissimilarity indices in the Housing Element. Theil's H index is provided in addition to these required measures. For segregation between cities within the Bay Area (inter-city segregation), this report includes dissimilarity indices at the regional level as required by HCD's AFFH guidelines. HCD's AFFH guidelines also require jurisdictions to compare conditions at the local level to the rest of the region; and this report presents the difference in the racial and income composition of a jurisdiction relative to the region as a whole to satisfy the comparison requirement.

1.2 Defining Segregation

Segregation is the separation of different demographic groups into different geographic locations or communities, meaning that groups are unevenly distributed across geographic space. This report examines two spatial forms of segregation: neighborhood level segregation *within* a local jurisdiction and city level segregation *between* jurisdictions in the Bay Area.

Neighborhood level segregation (*within* a jurisdiction, or *intra-city*): Segregation of race and income groups can occur from neighborhood to neighborhood *within* a city. For example, if a local jurisdiction has a population that is 20% Latinx, but some neighborhoods are 80% Latinx while others have nearly no Latinx residents, that jurisdiction would have segregated neighborhoods.

City level segregation (*between* jurisdictions in a region, or *inter-city*): Race and income divides also occur *between* jurisdictions in a region. A region could be very diverse with equal numbers of white, Asian, Black, and Latinx residents, but the region could also be highly segregated with each city comprised solely of one racial group.

There are many factors that have contributed to the generation and maintenance of segregation. Historically, racial segregation stemmed from explicit discrimination against people of color, such as restrictive covenants, redlining, and discrimination in mortgage lending. This history includes many overtly discriminatory policies made by federal, state, and local governments (Rothstein 2017). Segregation patterns are also affected by policies that appear race-neutral, such as land use decisions and the regulation of housing development.

Segregation has resulted in vastly unequal access to public goods such as quality schools, neighborhood services and amenities, parks and playgrounds, clean air and water, and public safety (Trounstein 2015). This generational lack of access for many communities, particularly people of color and lower income residents, has often resulted in poor life outcomes, including lower educational attainment, higher morbidity rates, and higher mortality rates (Chetty and Hendren 2018, Ananat 2011, Burch 2014, Cutler and Glaeser 1997, Sampson 2012, Sharkey 2013).

1.3 Segregation Patterns in the Bay Area

Across the San Francisco Bay Area, white residents and above moderate-income residents are significantly more segregated from other racial and income groups (see Appendix 2). The highest levels of racial segregation occur between the Black and white populations. The analysis completed for this report indicates that the amount of racial segregation both *within* Bay Area cities and *across* jurisdictions in the region has decreased since the year 2000. This finding is consistent with recent research from the Othering and Belonging Institute at UC Berkeley, which concluded that “[a]lthough 7

of the 9 Bay Area counties were more segregated in 2020 than they were in either 1980 or 1990, racial residential segregation in the region appears to have peaked around the year 2000 and has generally declined since.”⁴ However, compared to cities in other parts of California, Bay Area jurisdictions have more neighborhood level segregation between residents from different racial groups. Additionally, there is also more racial segregation *between* Bay Area cities compared to other regions in the state.

1.4 Segregation and Land Use

It is difficult to address segregation patterns without an analysis of both historical and existing land use policies that impact segregation patterns. Land use regulations influence what kind of housing is built in a city or neighborhood (Lens and Monkkonen 2016, Pendall 2000). These land use regulations in turn impact demographics: they can be used to affect the number of houses in a community, the number of people who live in the community, the wealth of the people who live in the community, and where within the community they reside (Trounstine 2018). Given disparities in wealth by race and ethnicity, the ability to afford housing in different neighborhoods, as influenced by land use regulations, is highly differentiated across racial and ethnic groups (Bayer, McMillan, and Reuben 2004).⁵ ABAG/MTC plans to issue a separate report detailing the existing land use policies that influence segregation patterns in the Bay Area.

⁴ For more information, see <https://belonging.berkeley.edu/most-segregated-cities-bay-area-2020>.

⁵ Using a household-weighted median of Bay Area county median household incomes, regional values were \$61,050 for Black residents, \$122,174 for Asian/Pacific Islander residents, \$121,794 for white residents, and \$76,306 for Latinx residents. For the source data, see U.S. Census Bureau, American Community Survey 5-Year Data (2015-2019), Table B19013B, Table B19013D, B19013H, and B19013I.



Definition of Terms - Geographies

Neighborhood: In this report, “neighborhoods” are approximated by tracts.⁶ Tracts are statistical geographic units defined by the U.S. Census Bureau for the purposes of disseminating data. In the Bay Area, tracts contain on average 4,500 residents. Nearly all Bay Area jurisdictions contain at least two census tracts, with larger jurisdictions containing dozens of tracts.

Jurisdiction: Jurisdiction is used to refer to the 109 cities, towns, and unincorporated county areas that are members of ABAG. Though not all ABAG jurisdictions are cities, this report also uses the term “city” interchangeably with “jurisdiction” in some places.

Region: The region is the nine-county San Francisco Bay Area, which is comprised of Alameda County, Contra Costa County, Marin County, Napa County, San Francisco County, San Mateo County, Santa Clara County, Solano County, and Sonoma County.

⁶ Throughout this report, neighborhood level segregation measures are calculated using census tract data. However, the racial dot maps in Figure 1 and Figure 5 use data from census blocks, while the income group dot maps in Figure 8 and Figure 12 use data from census block groups. These maps use data derived from a smaller geographic scale to better show spatial differences in where different groups live. Census block groups are subdivisions of census tracts, and census blocks are subdivisions of block groups. In the Bay Area, block groups contain on average 1,500 people, while census blocks contain on average 95 people.



2 RACIAL SEGREGATION IN TOWN OF LOS GATOS

Definition of Terms - Racial/Ethnic Groups

The U.S. Census Bureau classifies racial groups (e.g. white or Black/African American) separately from Hispanic/Latino ethnicity.⁷ This report combines U.S. Census Bureau definitions for race and ethnicity into the following racial groups:

White: Non-Hispanic white

Latinx: Hispanic or Latino of any race⁸

Black: Non-Hispanic Black/African American

Asian/Pacific Islander: Non-Hispanic Asian or Non-Hispanic Pacific Islander

People of Color: All who are not non-Hispanic white (including people who identify as “some other race” or “two or more races”)⁹

2.1 Neighborhood Level Racial Segregation (*within* Town of Los Gatos)

Racial dot maps are useful for visualizing how multiple racial groups are distributed within a specific geography. The racial dot map of Los Gatos in Figure 1 below offers a visual representation of the spatial distribution of racial groups within the jurisdiction. Generally, when the distribution of dots does not suggest patterns or clustering, segregation measures tend to be lower. Conversely, when clusters of certain groups are apparent on a racial dot map, segregation measures may be higher.

⁷ More information about the Census Bureau’s definitions of racial groups is available here:

<https://www.census.gov/topics/population/race/about.html>.

⁸ The term Hispanic has historically been used to describe people from numerous Central American, South American, and Caribbean countries. In recent years, the term Latino or Latinx has become preferred. This report generally uses Latinx to refer to this racial/ethnic group.

⁹ Given the uncertainty in the data for population size estimates for racial and ethnic groups not included in the Latinx, Black, or Asian/Pacific Islander categories, this report only analyzes these racial groups in the aggregate People of Color category.



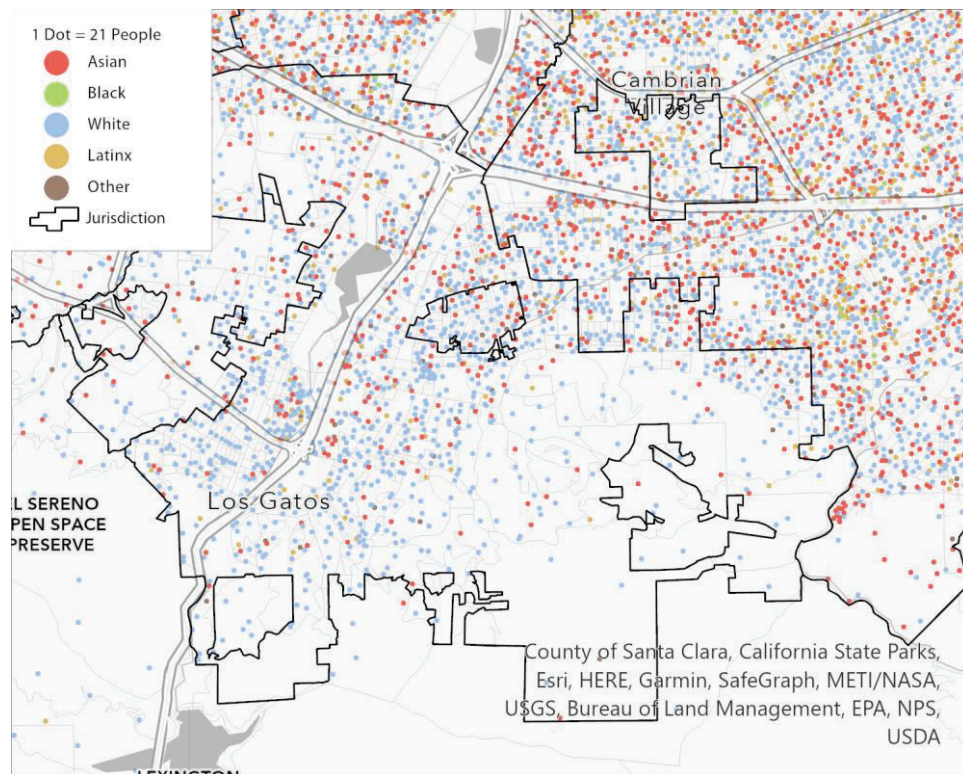


Figure 1: Racial Dot Map of Los Gatos (2020)

Universe: Population. Source: U.S. Census Bureau, 2020 Census State Redistricting Data (Public Law 94-171) Summary File, 2020 Census of Population and Housing, Table P002.

Note: The plot shows the racial distribution at the census block level for Town of Los Gatos and vicinity. Dots in each census block are randomly placed and should not be construed as actual placement of people.

There are many ways to quantitatively measure segregation. Each measure captures a different aspect of the ways in which groups are divided within a community. One way to measure segregation is by using an **isolation index**:

- The isolation index compares each neighborhood's composition to the jurisdiction's demographics as a whole.
- This index ranges from 0 to 1. Higher values indicate that a particular group is more isolated from other groups.
- Isolation indices indicate the potential for contact between different groups. The index can be interpreted as the experience of the average member of that group. For example, if the isolation index is .65 for Latinx residents in a city, then the average Latinx resident in that city lives in a neighborhood that is 65% Latinx.

Within Town of Los Gatos the most isolated racial group is white residents. Los Gatos's isolation index of 0.663 for white residents means that the average white resident lives in a neighborhood that is 66.3% white. Other racial groups are less isolated, meaning they may be more likely to encounter other racial groups in their neighborhoods. The isolation index values for all racial groups in Los Gatos for the years 2000, 2010, and 2020 can be found in Table 1 below. Among all racial groups in this jurisdiction, the white population's isolation index has changed the most over time, becoming less segregated from other racial groups between 2000 and 2020.

The “Bay Area Average” column in this table provides the average isolation index value across Bay Area jurisdictions for different racial groups in 2020.¹⁰ The data in this column can be used as a comparison to provide context for the levels of segregation experienced by racial groups in this jurisdiction. For example, Table 1 indicates the average isolation index value for white residents across all Bay Area jurisdictions is 0.491, meaning that in the average Bay Area jurisdiction a white resident lives in a neighborhood that is 49.1% white.

Table 1: Racial Isolation Index Values for Segregation within Los Gatos

Race	Los Gatos			Bay Area Average
	2000	2010	2020	2020
Asian/Pacific Islander	0.079	0.118	0.197	0.245
Black/African American	0.009	0.012	0.022	0.053
Latinx	0.059	0.082	0.104	0.251
White	0.838	0.774	0.663	0.491

Universe: Population.

Source: IPUMS National Historical Geographic Information System (NHGIS). U.S. Census Bureau, 2020 Census State Redistricting Data (Public Law 94-171) Summary File, 2020 Census of Population and Housing, Table P002. Data from 2010 is from U.S. Census Bureau, Census 2010, Table P4. Data for 2000 is standardized to 2010 census tract geographies and is from U.S. Census Bureau, Census 2000, Table P004.

Figure 2 below shows how racial isolation index values in Los Gatos compare to values in other Bay Area jurisdictions. In this chart, each dot represents a Bay Area jurisdiction. For each racial group, the spread of dots represents the range of isolation index values among Bay Area jurisdictions. Additionally, the black line within each racial group notes the isolation index value for that group in Town of Los Gatos, and each dashed red line represents the Bay Area average for the isolation index for that group. Local staff can use this chart to contextualize how segregation levels for racial groups in their jurisdiction compare to other jurisdictions in the region.

¹⁰ This average only includes the 104 jurisdictions that have more than one census tract, which is true for all comparisons of Bay Area jurisdictions’ segregation measures in this report. The segregation measures in this report are calculated by comparing the demographics of a jurisdiction’s census tracts to the jurisdiction’s demographics, and such calculations cannot be made for the five jurisdictions with only one census tract (Brisbane, Calistoga, Portola Valley, Rio Vista, and Yountville).

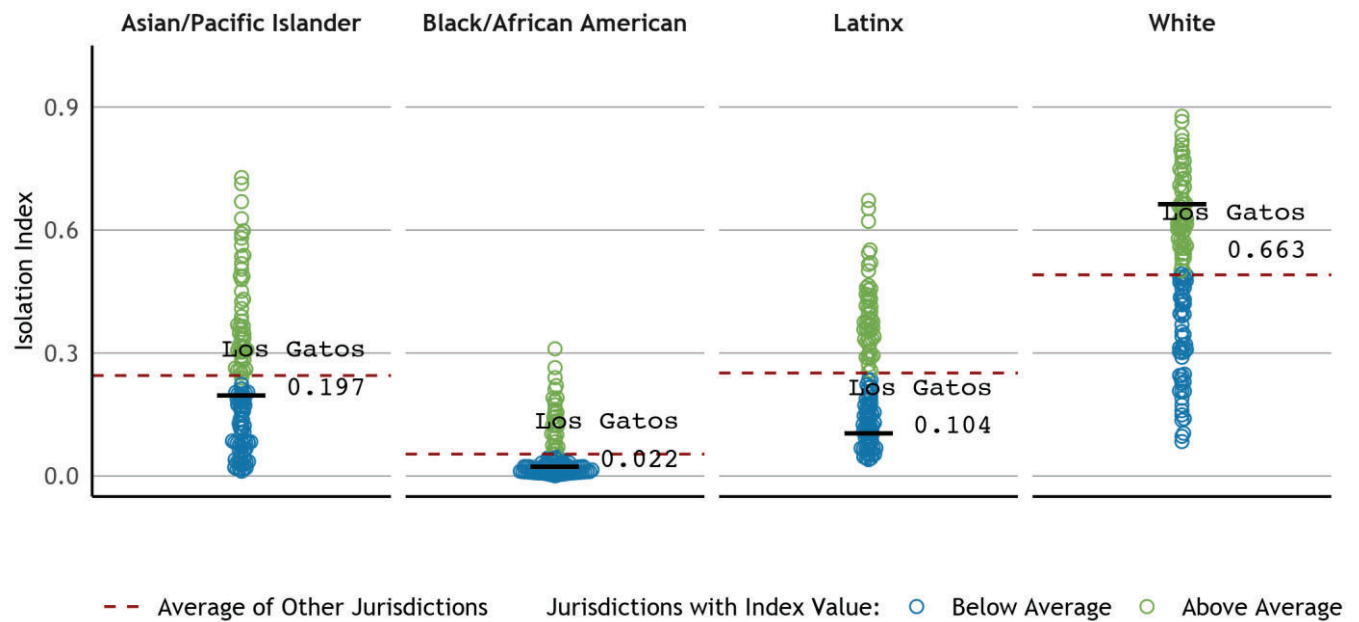


Figure 2: Racial Isolation Index Values for Los Gatos Compared to Other Bay Area Jurisdictions (2020)

Universe: Bay Area Jurisdictions.

Source: IPUMS National Historical Geographic Information System (NHGIS). U.S. Census Bureau, 2020 Census State Redistricting Data (Public Law 94-171) Summary File, 2020 Census of Population and Housing, Table P002.

Another way to measure segregation is by using a **dissimilarity index**:

- This index measures how evenly any two groups are distributed across neighborhoods relative to their representation in a city overall. The dissimilarity index at the jurisdiction level can be interpreted as the share of one group that would have to move neighborhoods to create perfect integration for these two groups.
- The dissimilarity index ranges from 0 to 1. Higher values indicate that groups are more unevenly distributed (e.g. they tend to live in different neighborhoods).

Dissimilarity Index Guidance for Cities with Small Racial Group Populations

The analysis conducted for this report suggests that dissimilarity index values are unreliable for a population group if that group represents approximately less than 5% of the jurisdiction's total population.

HCD's AFFH guidance requires the Housing Element to include the dissimilarity index values for racial groups, but also offers flexibility in emphasizing the importance of various measures. ABAG/MTC recommends that when cities have population groups that are less than 5% of the jurisdiction's population (see Table 4), jurisdiction staff use the isolation index or Thiel's H-Index to gain a more accurate understanding of their jurisdiction's neighborhood-level segregation patterns (*intra-city segregation*).

If a jurisdiction has a very small population of a racial group, this indicates that segregation between the jurisdiction and the region (*inter-city segregation*) is likely to be an important feature of the jurisdiction's segregation patterns.

In Town of Los Gatos, the Black/African American group is 0.9 percent of the population - so staff should be aware of this small population size when evaluating dissimilarity index values involving this group.

Table 2 below provides the dissimilarity index values indicating the level of segregation in Los Gatos between white residents and residents who are Black, Latinx, or Asian/Pacific Islander. The table also provides the dissimilarity index between white residents and all residents of color in the jurisdiction, and all dissimilarity index values are shown across three time periods (2000, 2010, and 2020).

In Los Gatos the highest segregation is between Black and white residents (see Table 2). Los Gatos's Black /white dissimilarity index of 0.369 means that 36.9% of Black (or white) residents would need to move to a different neighborhood to create perfect integration between Black residents and white residents. However, local jurisdiction staff should note that this dissimilarity index value is not a reliable data point due to small population size. See callout box above for more information.

The "Bay Area Average" column in this table provides the average dissimilarity index values for these racial group pairings across Bay Area jurisdictions in 2020. The data in this column can be used as a comparison to provide context for the levels of segregation between communities of color are from white residents in this jurisdiction.



For example, Table 2 indicates that the average Latinx/white dissimilarity index for a Bay Area jurisdiction is 0.207, so on average 20.7% of Latinx (or white residents) in a Bay Area jurisdiction would need to move to a different neighborhood within the jurisdiction to create perfect integration between Latinx and white residents in that jurisdiction.

Table 2: Racial Dissimilarity Index Values for Segregation within Los Gatos

Race	Los Gatos			Bay Area Average
	2000	2010	2020	2020
Asian/Pacific Islander vs. White	0.106	0.145	0.182	0.185
Black/African American vs. White	0.223*	0.246*	0.369*	0.244
Latinx vs. White	0.119	0.143	0.179	0.207
People of Color vs. White	0.093	0.124	0.157	0.168

Universe: Population.

Source: IPUMS National Historical Geographic Information System (NHGIS). U.S. Census Bureau, 2020 Census State Redistricting Data (Public Law 94-171) Summary File, 2020 Census of Population and Housing, Table P002. Data from 2010 is from U.S. Census Bureau, Census 2010, Table P4. Data for 2000 is standardized to 2010 census tract geographies and is from U.S. Census Bureau, Census 2000, Table P004.

Note: If a number is marked with an asterisk (*), it indicates that the index is based on a racial group making up less than 5 percent of the jurisdiction population, leading to unreliable numbers.

Figure 3 below shows how dissimilarity index values in Town of Los Gatos compare to values in other Bay Area jurisdictions. In this chart, each dot represents a Bay Area jurisdiction. For each racial group pairing, the spread of dots represents the range of dissimilarity index values among Bay Area jurisdictions. Additionally, the black line within each racial group pairing notes the dissimilarity index value in Los Gatos, and each dashed red line represents the Bay Area average for the dissimilarity index for that pairing. Similar to Figure 2, local staff can use this chart to contextualize how segregation levels between white residents and communities of color in their jurisdiction compare to the rest of the region. However, staff should be mindful of whether a racial group in their jurisdiction has a small population (approximately less than 5% of the jurisdiction's population), as the dissimilarity index value is less reliable for small populations.

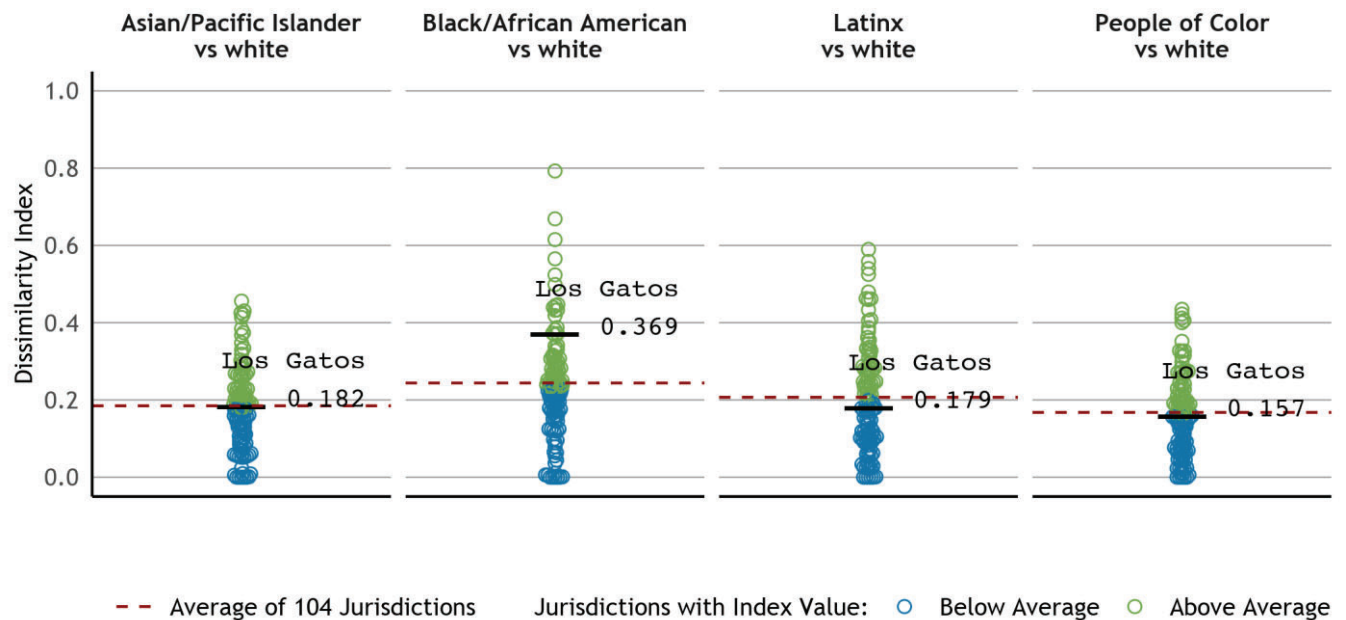


Figure 3: Racial Dissimilarity Index Values for Los Gatos Compared to Other Bay Area Jurisdictions (2020)

Universe: Bay Area Jurisdictions.

Source: IPUMS National Historical Geographic Information System (NHGIS). U.S. Census Bureau, 2020 Census State Redistricting Data (Public Law 94-171) Summary File, 2020 Census of Population and Housing, Table P002.

Note: The analysis conducted for this report suggests that dissimilarity index values are unreliable for a population group if that group represents approximately less than 5% of the jurisdiction's total population. ABAG/MTC recommends that when cities have population groups that are less than 5% of the jurisdiction's population (see Table 4), jurisdiction staff could focus on the isolation index or Thiel's H-Index to gain a more accurate understanding of neighborhood-level racial segregation in their jurisdiction.

The **Theil's H Index** can be used to measure segregation between all groups within a jurisdiction:

- This index measures how diverse each neighborhood is compared to the diversity of the whole city. Neighborhoods are weighted by their size, so that larger neighborhoods play a more significant role in determining the total measure of segregation.
- The index ranges from 0 to 1. A Theil's H Index value of 0 would mean all neighborhoods within a city have the same demographics as the whole city. A value of 1 would mean each group lives exclusively in their own, separate neighborhood.
- For jurisdictions with a high degree of diversity (multiple racial groups comprise more than 10% of the population), Theil's H offers the clearest summary of overall segregation.

The Theil's H Index values for neighborhood racial segregation in Los Gatos for the years 2000, 2010, and 2020 can be found in Table 3 below. The "Bay Area Average" column in the table provides the average Theil's H Index across Bay Area jurisdictions in 2020. Between 2010 and 2020, the Theil's H Index for racial segregation in Los Gatos increased, suggesting that there is now more neighborhood level racial segregation within the jurisdiction. In 2020, the Theil's H Index for racial segregation in Los

Gatos was lower than the average value for Bay Area jurisdictions, indicating that neighborhood level racial segregation in Los Gatos is less than in the average Bay Area city.

Table 3: Theil's H Index Values for Racial Segregation within Los Gatos

	Los Gatos			Bay Area Average
Index	2000	2010	2020	2020
Theil's H Multi-racial	0.011	0.015	0.023	0.042

Universe: Population.

Source: IPUMS National Historical Geographic Information System (NHGIS). U.S. Census Bureau, 2020 Census State Redistricting Data (Public Law 94-171) Summary File, 2020 Census of Population and Housing, Table P002. Data from 2010 is from U.S. Census Bureau, Census 2010, Table P4. Data for 2000 is standardized to 2010 census tract geographies and is from U.S. Census Bureau, Census 2000, Table P004.

Figure 4 below shows how Theil's H index values for racial segregation in Los Gatos compare to values in other Bay Area jurisdictions in 2020. In this chart, each dot represents a Bay Area jurisdiction. Additionally, the black line notes the Theil's H index value for neighborhood racial segregation in Los Gatos, and the dashed red line represents the average Theil's H index value across Bay Area jurisdictions. Local staff can use this chart to compare how neighborhood racial segregation levels in their jurisdiction compare to other jurisdictions in the region.

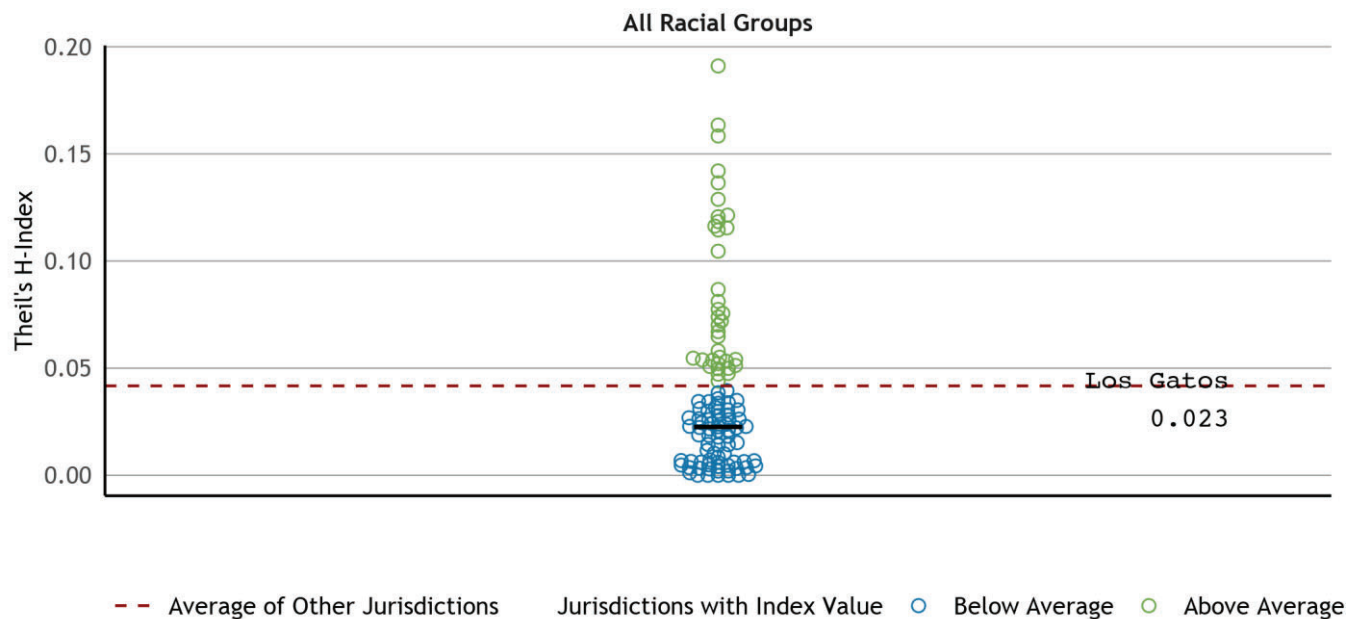


Figure 4: Theil's H Index Values for Racial Segregation in Los Gatos Compared to Other Bay Area Jurisdictions (2020)

Universe: Bay Area Jurisdictions.

Source: IPUMS National Historical Geographic Information System (NHGIS). U.S. Census Bureau, 2020 Census State Redistricting Data (Public Law 94-171) Summary File, 2020 Census of Population and Housing, Table P002.

2.2 Regional Racial Segregation (*between* Los Gatos and other jurisdictions)

At the regional level, segregation is measured between *cities* instead of between *neighborhoods*. Racial dot maps are not only useful for examining neighborhood racial segregation within a jurisdiction, but these maps can also be used to explore the racial demographic differences between different jurisdictions in the region. Figure 5 below presents a racial dot map showing the spatial distribution of racial groups in Los Gatos as well as in nearby Bay Area cities.

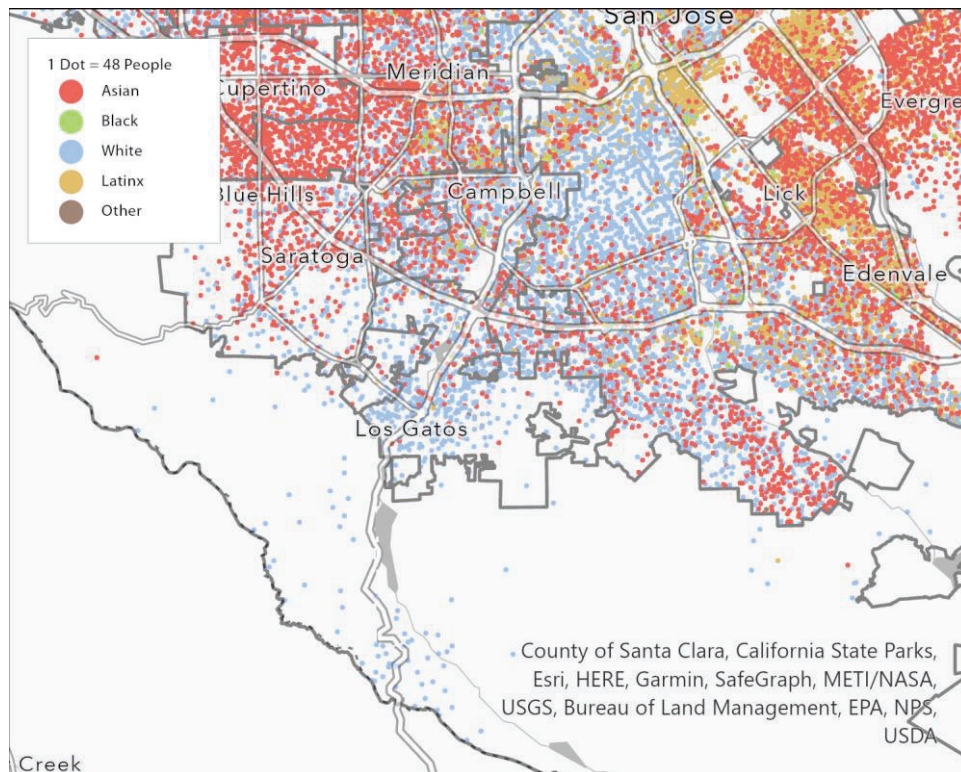


Figure 5: Racial Dot Map of Los Gatos and Surrounding Areas (2020)

Universe: Population.

Source: U.S. Census Bureau, 2020 Census State Redistricting Data (Public Law 94-171) Summary File, 2020 Census of Population and Housing, Table P002.

Note: The plot shows the racial distribution at the census block level for Town of Los Gatos and vicinity. Dots in each census block are randomly placed and should not be construed as actual placement of people.

To understand how each city contributes to the total segregation of the Bay Area, one can look at the difference in the racial composition of a jurisdiction compared to the racial composition of the region as a whole. The racial demographics in Los Gatos for the years 2000, 2010, and 2020 can be found in Table 4 below. The table also provides the racial composition of the nine-county Bay Area. As of 2020, Los Gatos has a higher share of white residents than the Bay Area as a whole, a lower share of Latinx residents, a lower share of Black residents, and a lower share of Asian/Pacific Islander residents.

Table 4: Population by Racial Group, Los Gatos and the Region

Race	Los Gatos			Bay Area
	2000	2010	2020	2020
Asian/Pacific Islander	7.6%	10.9%	18.3%	28.2%
Black/African American	0.8%	0.9%	0.9%	5.6%
Latinx	5.2%	7.2%	9.0%	24.4%
Other or Multiple Races	3.2%	4.0%	6.5%	5.9%
White	83.3%	77.0%	65.3%	35.8%

Universe: Population.

Source: IPUMS National Historical Geographic Information System (NHGIS). U.S. Census Bureau, 2020 Census State Redistricting Data (Public Law 94-171) Summary File, 2020 Census of Population and Housing, Table P002. Data from 2010 is from U.S. Census Bureau, Census 2010, Table P4. Data for 2000 is standardized to 2010 census tract geographies and is from U.S. Census Bureau, Census 2000, Table P004.

Figure 6 below compares the racial demographics in Los Gatos to those of all 109 Bay Area jurisdictions.¹¹ In this chart, each dot represents a Bay Area jurisdiction. For each racial group, the spread of dots represents the range of that group's representation among Bay Area jurisdictions. Additionally, the black line within each racial group notes the percentage of the population of Town of Los Gatos represented by that group and how that percentage ranks among all 109 jurisdictions. Local staff can use this chart to compare the representation of different racial groups in their jurisdiction to those groups' representation in other jurisdictions in the region, which can indicate the extent of segregation between this jurisdiction and the region.

¹¹ While comparisons of segregation measures are made only using the 104 jurisdictions with more than one census tract, this comparison of jurisdiction level demographic data can be made using all 109 jurisdictions.



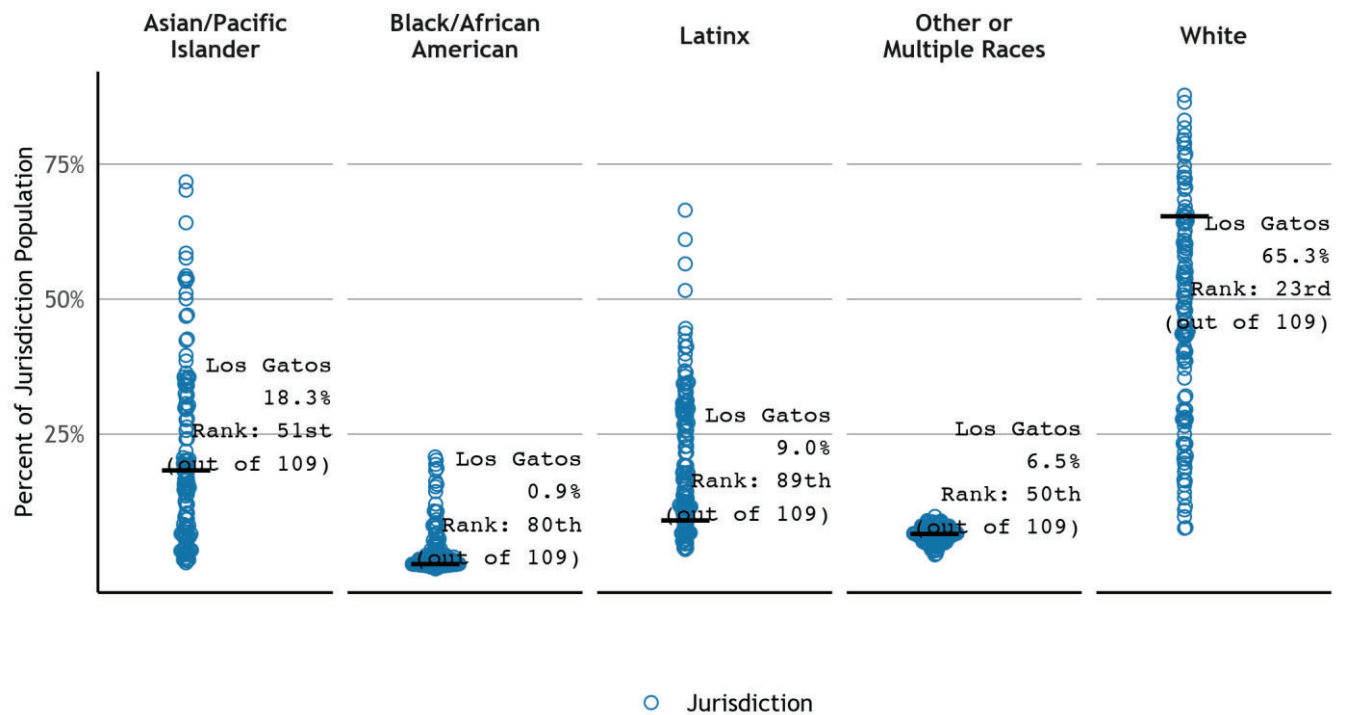


Figure 6: Racial Demographics of Los Gatos Compared to All Bay Area Jurisdictions (2020)

Universe: Bay Area Jurisdictions.

Source U.S. Census Bureau, 2020 Census State Redistricting Data (Public Law 94-171) Summary File, 2020 Census of Population and Housing, Table P002.

The map in Figure 7 below also illustrates regional racial segregation between Los Gatos and other jurisdictions. This map demonstrates how the percentage of people of color in Los Gatos and surrounding jurisdictions compares to the Bay Area as a whole:

- Jurisdictions shaded orange have a share of people of color that is less than the Bay Area as a whole, and the degree of difference is greater than five percentage points.
- Jurisdictions shaded white have a share of people of color comparable to the regional percentage of people of color (within five percentage points).
- Jurisdictions shaded grey have a share of people of color that is more than five percentage points greater than the regional percentage of people of color.

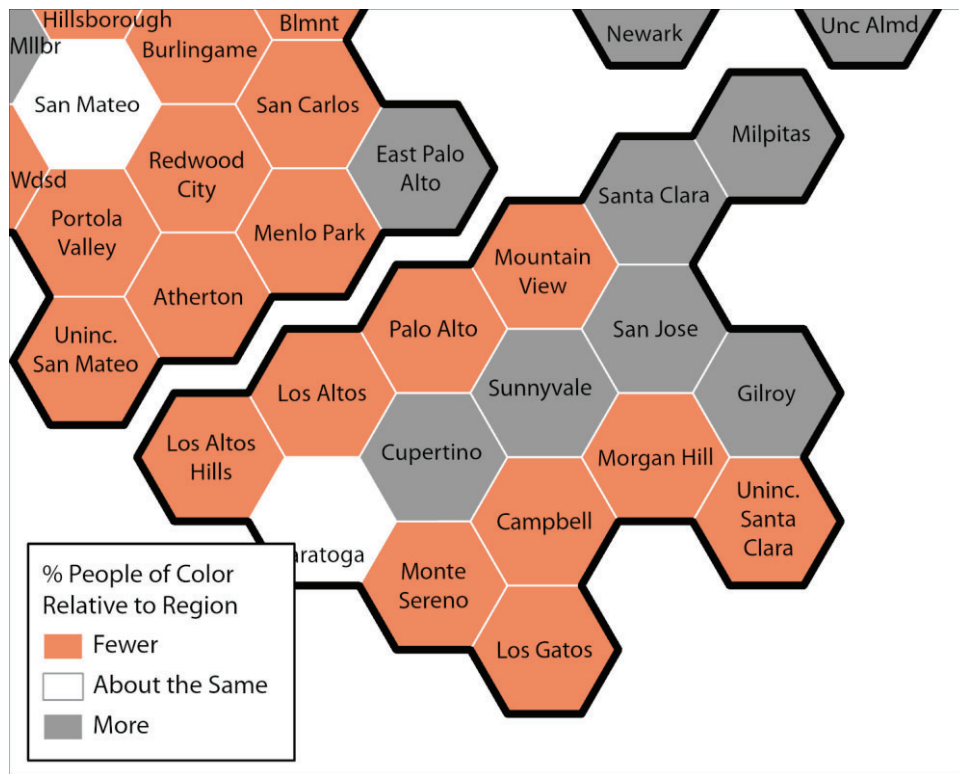


Figure 7: Comparing the Share of People of Color in Los Gatos and Vicinity to the Bay Area (2020)

Universe: Population.

Source: U.S. Census Bureau, 2020 Census State Redistricting Data (Public Law 94-171) Summary File, 2020 Census of Population and Housing, Table P002.

Note: People of color refer to persons not identifying as non-Hispanic white. The nine-county Bay Area is the reference region for this map.

Segregation between jurisdictions in the region can also be analyzed by calculating regional values for the segregation indices discussed previously. Table 5 presents dissimilarity index, isolation index, and Theil's H index values for racial segregation for the entire nine-county Bay Area in 2010 and 2020. In the previous section of this report focused on neighborhood level racial segregation, these indices were calculated by comparing the racial demographics of the census tracts within a jurisdiction to the demographics of the jurisdiction as a whole. In Table 5, these measures are calculated by comparing the racial demographics of local jurisdictions to the region's racial makeup. For example, looking at the 2020 data, Table 5 shows the white isolation index value for the region is 0.429, meaning that on average white Bay Area residents live in a jurisdiction that is 42.9% white in 2020. An example of regional dissimilarity index values in Table 5 is the Black/white dissimilarity index value of 0.459, which means that across the region 45.9% of Black (or white) residents would need to move to a different jurisdiction to evenly distribute Black and white residents across Bay Area jurisdictions. The dissimilarity index values in Table 5 reflect recommendations made in HCD's AFFH guidance for calculating dissimilarity at the region level.¹² The regional value for the Theil's H index measures how

¹² For more information on HCD's recommendations regarding data considerations for analyzing integration and segregation patterns, see page 31 of the AFFH Guidance Memo.

diverse each Bay Area jurisdiction is compared to the racial diversity of the whole region. A Theil's H Index value of 0 would mean all *jurisdictions* within the Bay Area have the same racial demographics as the entire region, while a value of 1 would mean each racial group lives exclusively in their own separate jurisdiction. The regional Theil's H index value for racial segregation decreased slightly between 2010 and 2020, meaning that racial groups in the Bay Area are now slightly less separated by the borders between jurisdictions.

Table 5: Regional Racial Segregation Measures

Index	Group	2010	2020
Isolation Index Regional Level	Asian/Pacific Islander	0.317	0.378
	Black/African American	0.144	0.118
	Latinx	0.283	0.291
	White	0.496	0.429
	People of Color	0.629	0.682
Dissimilarity Index Regional Level	Asian/Pacific Islander vs. White	0.384	0.369
	Black/African American vs. White	0.475	0.459
	Latinx vs. White	0.301	0.297
	People of Color vs. White	0.296	0.293
Theil's H Multi-racial	All Racial Groups	0.103	0.097

Universe: Population.

Source: IPUMS National Historical Geographic Information System (NHGIS). U.S. Census Bureau, 2020 Census State Redistricting Data (Public Law 94-171) Summary File, 2020 Census of Population and Housing, Table P002. Data from 2010 is from U.S. Census Bureau, 2010 Census of Population and Housing, Table P4.

3 INCOME SEGREGATION IN TOWN OF LOS GATOS

Definition of Terms - Income Groups

When analyzing segregation by income, this report uses income group designations consistent with the Regional Housing Needs Allocation and the Housing Element:

Very low-income: individuals earning less than 50% of Area Median Income (AMI)

Low-income: individuals earning 50%-80% of AMI

Moderate-income: individuals earning 80%-120% of AMI

Above moderate-income: individuals earning 120% or more of AMI

Additionally, this report uses the term "lower-income" to refer to all people who earn less than 80% of AMI, which includes both low-income and very low-income individuals.

The income groups described above are based on U.S. Department of Housing and Urban Development (HUD) calculations for AMI. HUD calculates the AMI for different metropolitan areas, and the nine county Bay Area includes the following metropolitan areas: Napa Metro Area (Napa County), Oakland-Fremont Metro Area (Alameda and Contra Costa Counties), San Francisco Metro Area (Marin, San Francisco, and San Mateo Counties), San Jose-Sunnyvale-Santa Clara Metro Area (Santa Clara County), Santa Rosa Metro Area (Sonoma County), and Vallejo-Fairfield Metro Area (Solano County).

The income categories used in this report are based on the AMI for the HUD metro area where this jurisdiction is located.

3.1 Neighborhood Level Income Segregation (*within* Los Gatos)

Income segregation can be measured using similar indices as racial segregation. Income dot maps, similar to the racial dot maps shown in Figures 1 and 5, are useful for visualizing segregation between multiple income groups at the same time. The income dot map of Los Gatos in Figure 8 below offers a visual representation of the spatial distribution of income groups within the jurisdiction. As with the racial dot maps, when the dots show lack of a pattern or clustering, income segregation measures tend to be lower, and conversely, when clusters are apparent, the segregation measures may be higher as well.



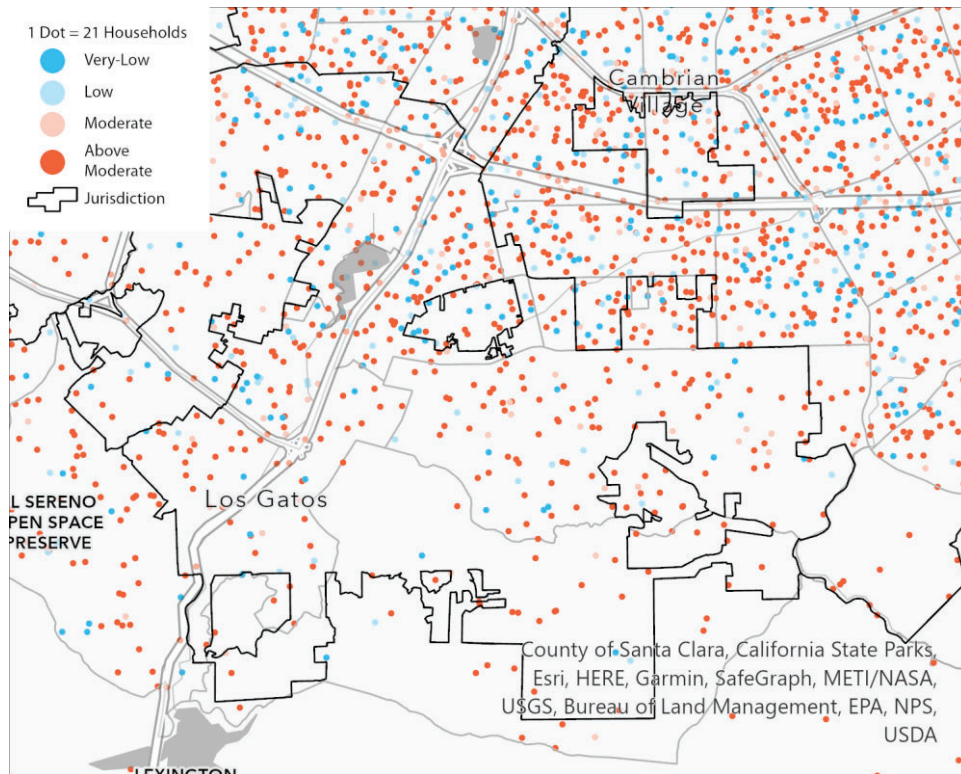


Figure 8: Income Dot Map of Los Gatos (2015)

Universe: Population.

Source: U.S. Department of Housing and Urban Development, American Community Survey 5-Year 2011-2015 Low- and Moderate-Income Summary Data.

Note: The plot shows the income group distribution at the census block group level for Town of Los Gatos and vicinity. Dots in each block group are randomly placed and should not be construed as actual placement of individuals.

The isolation index values for all income groups in Los Gatos for the years 2010 and 2015 can be found in Table 6 below.¹³ Above Moderate-income residents are the most isolated income group in Los Gatos. Los Gatos's isolation index of 0.619 for these residents means that the average Above Moderate-income resident in Los Gatos lives in a neighborhood that is 61.9% Above Moderate-income. Among all income groups, the Above Moderate-income population's isolation index has changed the most over time, becoming less segregated from other income groups between 2010 and 2015.

Similar to the tables presented earlier for neighborhood racial segregation, the "Bay Area Average" column in Table 6 provides the average isolation index value across Bay Area jurisdictions for different income groups in 2015. The data in this column can be used as a comparison to provide context for the levels of segregation experienced by income groups in this jurisdiction. For example, Table 6 indicates the average isolation index value for very low-income residents across Bay Area jurisdictions is 0.269,

¹³ This report presents data for income segregation for the years 2010 and 2015, which is different than the time periods used for racial segregation. This deviation stems from the [data source recommended for income segregation calculations](#) in HCD's AFFH Guidelines. This data source most recently updated with data from the 2011-2015 American Community Survey 5-year estimates. For more information on HCD's recommendations for calculating income segregation, see [page 32 of HCD's AFFH Guidelines](#).

meaning that in the average Bay Area jurisdiction a very low-income resident lives in a neighborhood that is 26.9% very low-income.

Table 6: Income Group Isolation Index Values for Segregation within Los Gatos

Income Group	Los Gatos		Bay Area Average
	2010	2015	2015
Very Low-Income (<50% AMI)	0.125	0.162	0.269
Low-Income (50%-80% AMI)	0.067	0.115	0.145
Moderate-Income (80%-120% AMI)	0.135	0.166	0.183
Above Moderate-Income (>120% AMI)	0.728	0.619	0.507

Universe: Population.

Source: Data for 2015 is from U.S. Department of Housing and Urban Development, American Community Survey 5-Year 2011-2015 Low- and Moderate-Income Summary Data. Data for 2010 is from U.S. Department of Housing and Urban Development, American Community Survey 5-Year 2006-2010 Low- and Moderate-Income Summary Data.

Figure 9 below shows how income group isolation index values in Los Gatos compare to values in other Bay Area jurisdictions. In this chart, each dot represents a Bay Area jurisdiction. For each income group, the spread of dots represents the range of isolation index values among Bay Area jurisdictions. Additionally, the black line within each income group notes the isolation index value for that group in Los Gatos, and each dashed red line represents the Bay Area average for the isolation index for that group. Local staff can use this chart to contextualize how segregation levels for income groups in their jurisdiction compare to the rest of the region.

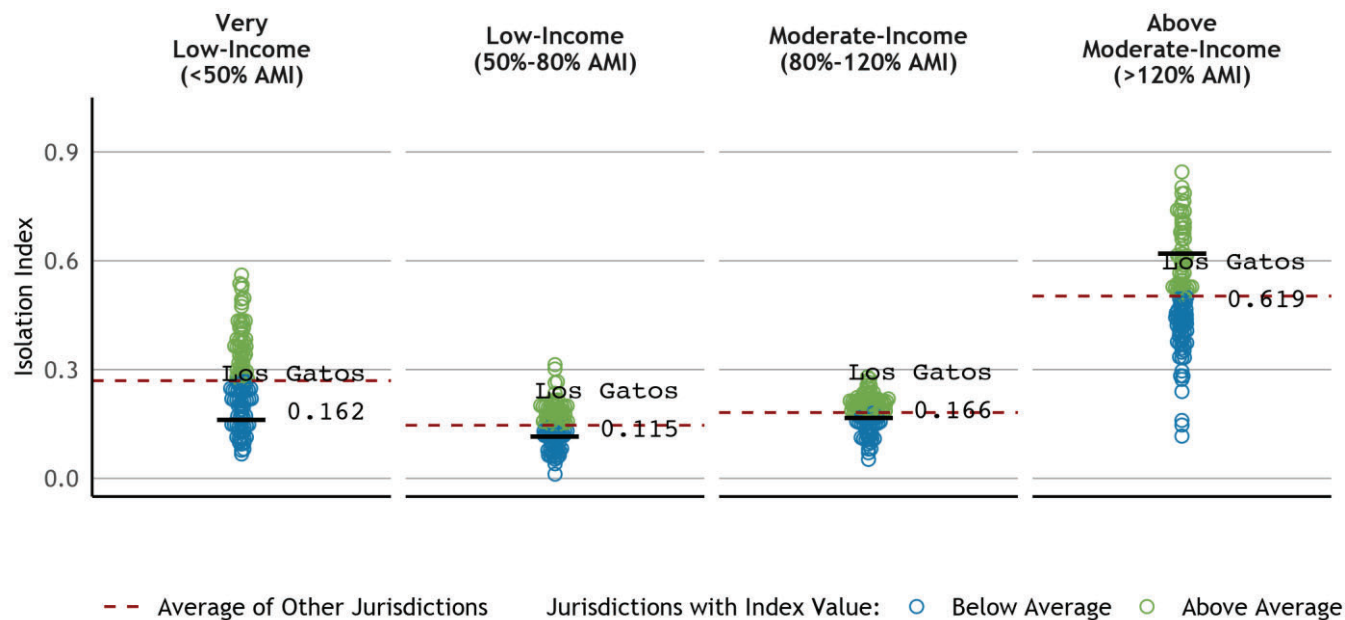


Figure 9: Income Group Isolation Index Values for Los Gatos Compared to Other Bay Area Jurisdictions (2015)

Universe: Bay Area Jurisdictions.

Source: U.S. Department of Housing and Urban Development, American Community Survey 5-Year 2011-2015 Low- and Moderate-Income Summary Data.

Table 7 below provides the dissimilarity index values indicating the level of segregation in Los Gatos between residents who are lower-income (earning less than 80% of AMI) and those who are not lower-income (earning above 80% of AMI). This data aligns with the requirements described in HCD's AFFH Guidance Memo for identifying dissimilarity for lower-income households.¹⁴ Segregation in Los Gatos between lower-income residents and residents who are not lower-income increased between 2010 and 2015. Additionally, Table 7 shows dissimilarity index values for the level of segregation in Albany between residents who are very low-income (earning less than 50% of AMI) and those who are above moderate-income (earning above 120% of AMI). This supplementary data point provides additional nuance to an analysis of income segregation, as this index value indicates the extent to which a jurisdiction's lowest and highest income residents live in separate neighborhoods.

Similar to other tables in this report, the "Bay Area Average" column shows the average dissimilarity index values for these income group pairings across Bay Area jurisdictions in 2015. For example, Table 7 indicates that the average dissimilarity index between lower-income residents and other residents in a Bay Area jurisdiction is 0.198, so on average 19.8% of lower-income residents in a Bay Area jurisdiction would need to move to a different neighborhood within the jurisdiction to create perfect income group integration in that jurisdiction.

¹⁴ For more information, see page 32 of HCD's AFFH Guidance Memo.

In 2015, the income segregation in Los Gatos between lower-income residents and other residents was higher than the average value for Bay Area jurisdictions (See Table 7). This means that the lower-income residents are more segregated from other residents within Los Gatos compared to other Jurisdictions in the region.

Table 7: Income Group Dissimilarity Index Values for Segregation within Los Gatos

Income Group	Los Gatos		Bay Area Average
	2010	2015	2015
Below 80% AMI vs. Above 80% AMI	0.142	0.226	0.198
Below 50% AMI vs. Above 120% AMI	0.194	0.234	0.253

Universe: Population.

Source: Data for 2015 is from U.S. Department of Housing and Urban Development, American Community Survey 5-Year 2011-2015 Low- and Moderate-Income Summary Data. Data for 2010 is from U.S. Department of Housing and Urban Development, American Community Survey 5-Year 2006-2010 Low- and Moderate-Income Summary Data.

Figure 10 below shows how dissimilarity index values for income segregation in Los Gatos compare to values in other Bay Area jurisdictions. In this chart, each dot represents a Bay Area jurisdiction. For each income group pairing, the spread of dots represents the range of dissimilarity index values among Bay Area jurisdictions. Additionally, the black line within each income group pairing notes the dissimilarity index value in Los Gatos, and each dashed red line represents the Bay Area average for the dissimilarity index for that pairing. Local staff can use this chart to contextualize how segregation levels between lower-income residents and wealthier residents in their jurisdiction compared to the rest of the region.

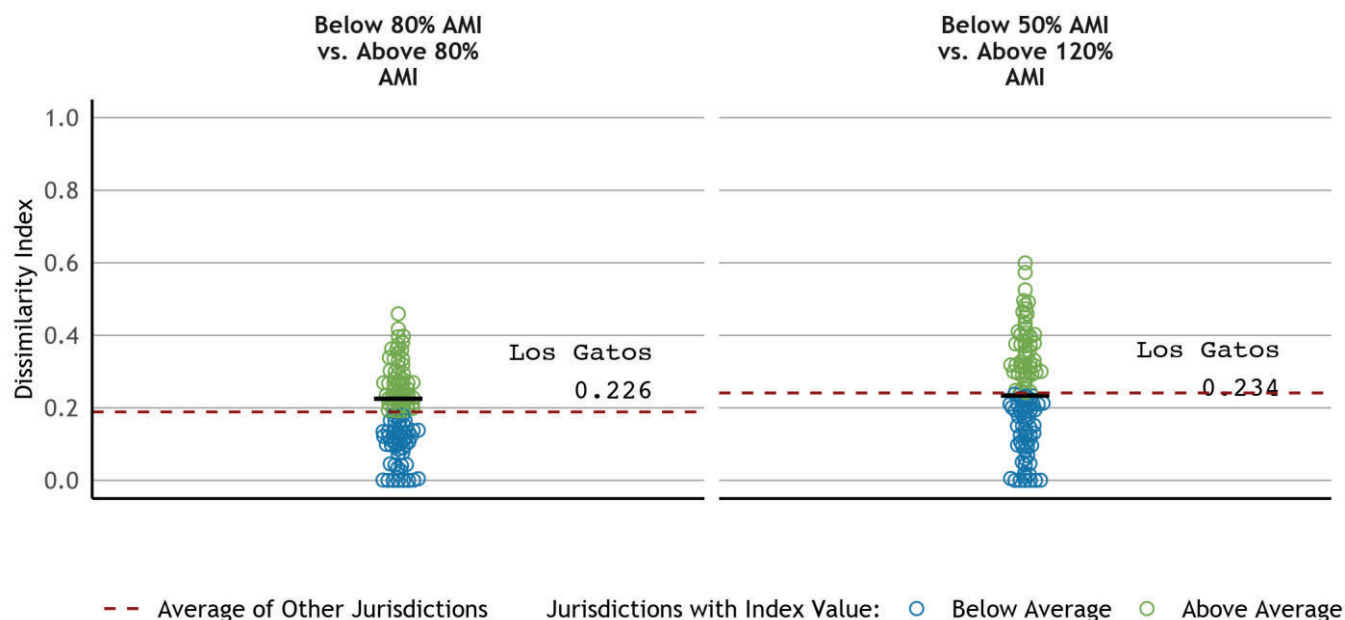


Figure 10: Income Group Dissimilarity Index Values for Los Gatos Compared to Other Bay Area Jurisdictions (2015)

Universe: Bay Area Jurisdictions.

Source: U.S. Department of Housing and Urban Development, American Community Survey 5-Year 2011-2015 Low- and Moderate-Income Summary Data.

The Theil's H Index values for neighborhood income group segregation in Los Gatos for the years 2010 and 2015 can be found in Table 8 below. The "Bay Area Average" column in this table provides the average Theil's H Index value across Bay Area jurisdictions for different income groups in 2015. By 2015, the Theil's H Index value for income segregation in Los Gatos was about the same amount as it had been in 2010. In 2015, the Theil's H Index value for income group segregation in Los Gatos was lower than the average value for Bay Area jurisdictions, indicating there is less neighborhood level income segregation in Los Gatos than in the average Bay Area city.

Table 8: Theil's H Index Values for Income Segregation within Los Gatos

	Los Gatos		Bay Area Average
Index	2010	2015	2015
Theil's H Multi-income	0.030	0.028	0.043

Universe: Population.

Source: Data for 2015 is from U.S. Department of Housing and Urban Development, American Community Survey 5-Year 2011-2015 Low- and Moderate-Income Summary Data. Data for 2010 is from U.S. Department of Housing and Urban Development, American Community Survey 5-Year 2006-2010 Low- and Moderate-Income Summary Data.



ASSOCIATION OF BAY AREA GOVERNMENTS
METROPOLITAN TRANSPORTATION COMMISSION



Technical Assistance
for Local Planning
HOUSING

Figure 11 below shows how Theil's H index values for income group segregation in Los Gatos compare to values in other Bay Area jurisdictions in 2015. In this chart, each dot represents a Bay Area jurisdiction. Additionally, the black line notes the Theil's H index value for income group segregation in Los Gatos, and the dashed red line represents the average Theil's H index value across Bay Area jurisdictions. Local staff can use this chart to compare how neighborhood income group segregation levels in their jurisdiction compare to other jurisdictions in the region.

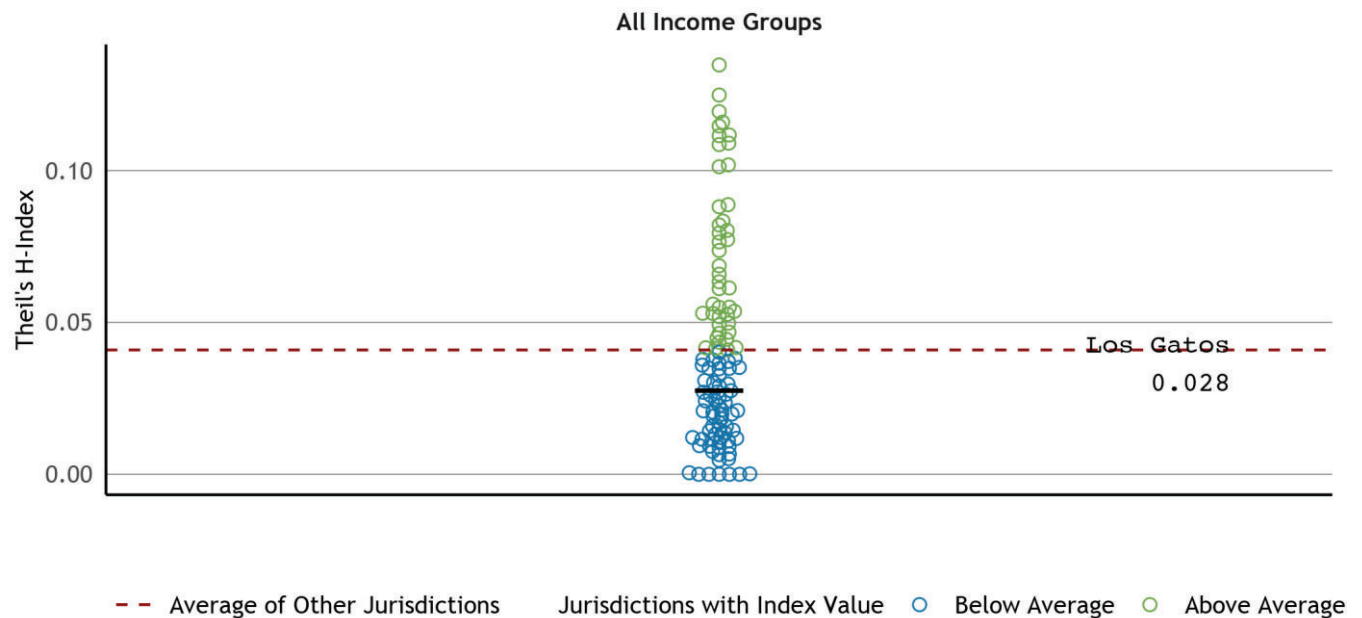


Figure 11: Income Group Theil's H Index Values for Los Gatos Compared to Other Bay Area Jurisdictions (2015)

Universe: Bay Area Jurisdictions.

Source: U.S. Department of Housing and Urban Development, American Community Survey 5-Year 2011-2015 Low- and Moderate-Income Summary Data.

3.2 Regional Income Segregation (*between* Los Gatos and other jurisdictions)

At the regional level, segregation is measured between jurisdictions instead of between neighborhoods. Income dot maps are not only useful for examining neighborhood income segregation within a jurisdiction, but these maps can also be used to explore income demographic differences between jurisdictions in the region. Figure 12 below presents an income dot map showing the spatial distribution of income groups in Los Gatos as well as in nearby Bay Area jurisdictions.

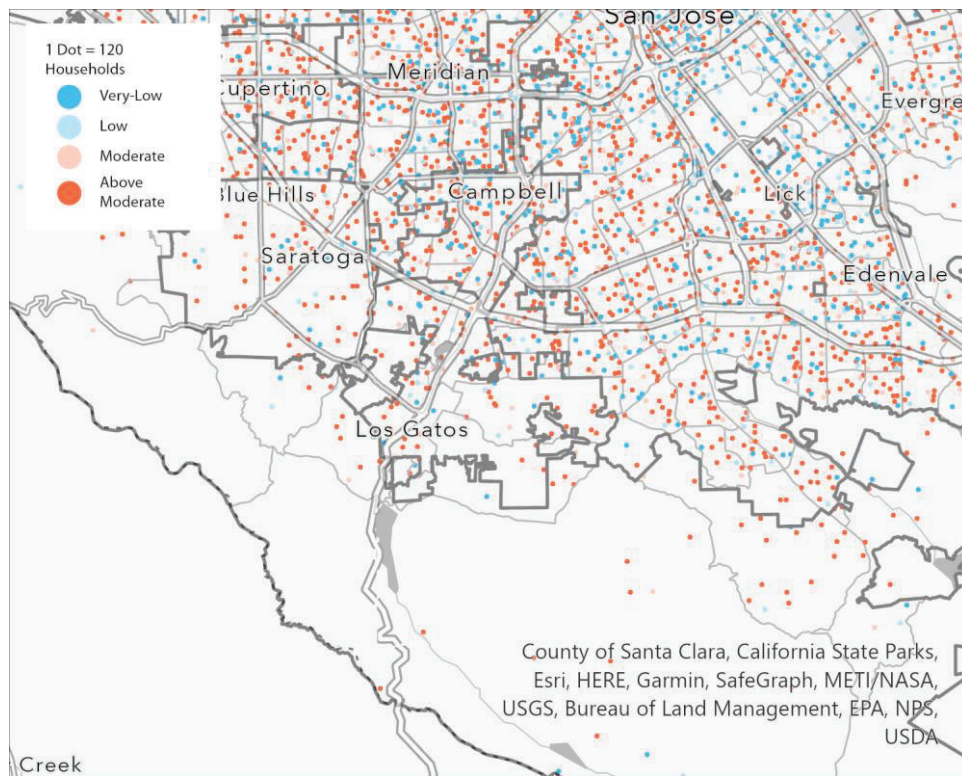


Figure 12: Income Dot Map of Los Gatos and Surrounding Areas (2015)

Universe: Population.

Source: U.S. Department of Housing and Urban Development, American Community Survey 5-Year 2011-2015 Low- and Moderate-Income Summary Data.

Note: The plot shows the income group distribution at the census block group level for Town of Los Gatos and vicinity. Dots in each block group are randomly placed and should not be construed as actual placement of individuals.

When looking at income segregation between jurisdictions in the Bay Area, one can examine how Los Gatos differs from the region. The income demographics in Los Gatos for the years 2010 and 2015 can be found in Table 9 below. The table also provides the income composition of the nine-county Bay Area in 2015. As of that year, Los Gatos had a lower share of very low-income residents than the Bay Area as a whole, a lower share of low-income residents, a lower share of moderate-income residents, and a higher share of above moderate-income residents.

Table 9: Population by Income Group, Los Gatos and the Region

Income Group	Los Gatos		Bay Area
	2010	2015	2015
Very Low-Income (<50% AMI)	10.83%	14.29%	28.7%
Low-Income (50%-80% AMI)	6.56%	10.57%	14.3%
Moderate-Income (80%-120% AMI)	11%	16.34%	17.6%
Above Moderate-Income (>120% AMI)	71.62%	58.8%	39.4%

Universe: Population.

Source: Data for 2015 is from Housing U.S. Department of and Urban Development, American Community Survey 5-Year 2011-2015 Low- and Moderate-Income Summary Data. Data for 2010 is from U.S. Department of Housing and Urban Development, American Community Survey 5-Year 2006-2010 Low- and Moderate-Income Summary Data.

Figure 13 below compares the income demographics in Los Gatos to other Bay Area jurisdictions.¹⁵ Like the chart in Figure 3, each dot represents a Bay Area jurisdiction. For each income group, the spread of dots represents the range of that group's representation among Bay Area jurisdictions. The smallest range is among jurisdictions' moderate-income populations, while Bay Area jurisdictions vary the most in the share of their population that is above moderate-income. Additionally, the black lines within each income group note the percentage of Los Gatos population represented by that group and how that percentage ranks among other jurisdictions. Local staff can use this chart to compare the representation of different income groups in their jurisdiction to those groups' representation in other jurisdictions in the region, which can indicate the extent of segregation between this jurisdiction and the region.

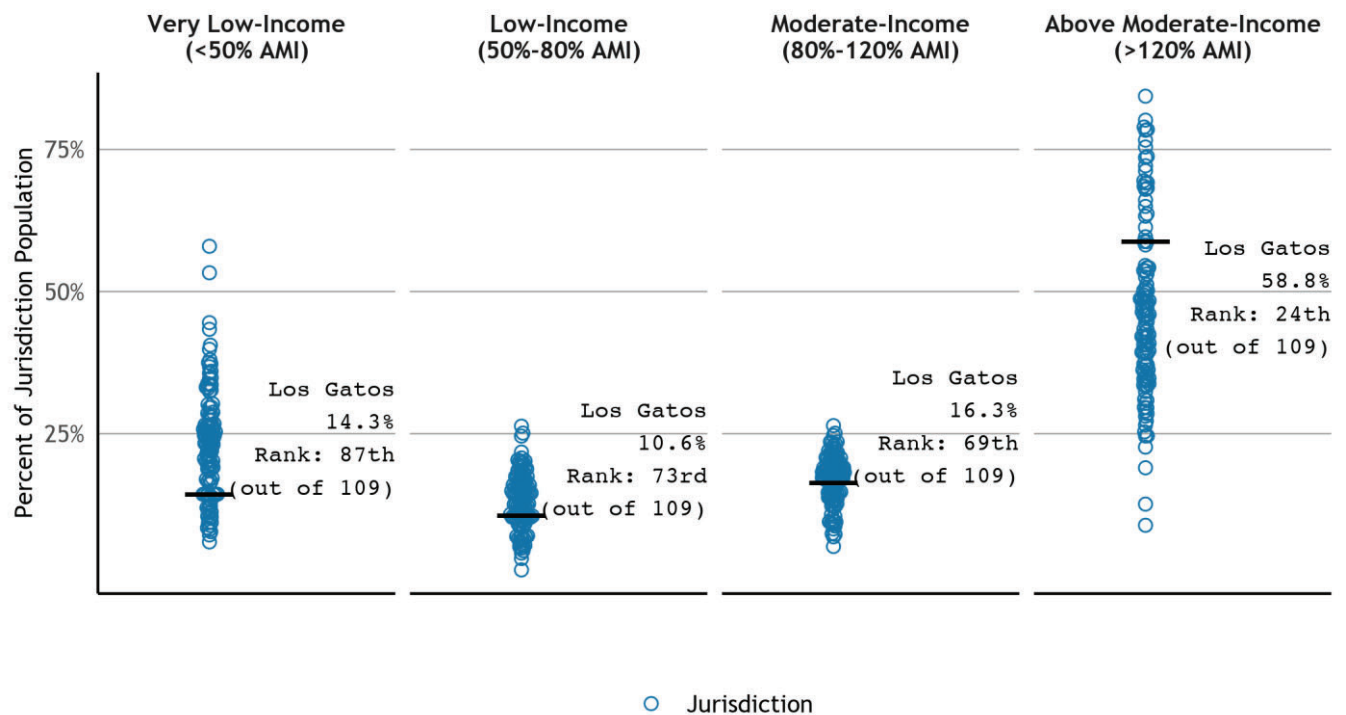


Figure 13: Income Demographics of Los Gatos Compared to Other Bay Area Jurisdictions (2015)

Universe: Bay Area Jurisdictions.

Source: U.S. Department of Housing and Urban Development, American Community Survey 5-Year 2011-2015 Low- and Moderate-Income Summary Data.

¹⁵ While comparisons of segregation measures are made only using the 104 jurisdictions with more than one census tract, this comparison of jurisdiction level demographic data can be made using all 109 jurisdictions.

Income segregation between jurisdictions in the region can also be analyzed by calculating regional values for the segregation indices discussed previously. Similar to the regional racial segregation measures shown in Table 5, Table 10 presents dissimilarity index, isolation index, and Theil's H index values for income segregation for the entire nine-county Bay Area in 2010 and 2015. In the previous section of this report focused on neighborhood level income segregation, segregation indices were calculated by comparing the income demographics of the census tracts within a jurisdiction to the demographics of the jurisdiction as a whole. In Table 10, these measures are calculated by comparing the income demographics of local jurisdictions to the region's income group makeup. For example, looking at 2015 data, Table 10 shows the regional isolation index value for very low-income residents is 0.315 for 2015, meaning that on average very low-income Bay Area residents live in a jurisdiction that is 31.5% very low-income. The regional dissimilarity index for lower-income residents and other residents is 0.194 in 2015, which means that across the region 19.4% of lower-income residents would need to move to a different jurisdiction to create perfect income group integration in the Bay Area as a whole. The regional value for the Theil's H index measures how diverse each Bay Area jurisdiction is compared to the income group diversity of the whole region. A Theil's H Index value of 0 would mean all jurisdictions within the Bay Area have the same income demographics as the entire region, while a value of 1 would mean each income group lives exclusively in their own separate jurisdiction. The regional Theil's H index value for income segregation decreased slightly between 2010 and 2015, meaning that income groups in the Bay Area are now slightly less separated by the borders between jurisdictions.

Table 10: Regional Income Segregation Measures

Index	Group	2010	2015
Isolation Index Regional Level	Very Low-Income (<50% AMI)	0.277	0.315
	Low-Income (50%-80% AMI)	0.157	0.154
	Moderate-Income (80%-120% AMI)	0.185	0.180
	Above Moderate-Income (>120% AMI)	0.467	0.435
Dissimilarity Index Regional Level	Below 80% AMI vs. Above 80% AMI	0.186	0.194
	Below 50% AMI vs. Above 120% AMI	0.238	0.248
Theil's H Multi-income	All Income Groups	0.034	0.032

Universe: Population.

Source: Data for 2015 is from U.S. Department of Housing and Urban Development, American Community Survey 5-Year 2011-2015 Low- and Moderate-Income Summary Data. Data for 2010 is from U.S. Department of Housing and Urban Development, American Community Survey 5-Year 2006-2010 Low- and Moderate-Income Summary Data.

4 APPENDIX 1: SUMMARY OF FINDINGS

4.1 Segregation in Town of Los Gatos

- The isolation index measures the segregation of a single group, and the dissimilarity index measures segregation between two different groups. The Theil's H-Index can be used to measure segregation between all racial or income groups across the city at once.
- As of 2020, white residents are the most segregated compared to other racial groups in Los Gatos, as measured by the isolation index. White residents live in neighborhoods where they are less likely to come into contact with other racial groups.
- Among all racial groups, the white population's isolation index value has changed the most over time, becoming less segregated from other racial groups between 2000 and 2020.
- According to the dissimilarity index, within Los Gatos the highest level of racial segregation is between Black and white residents.¹⁶ However, local jurisdiction staff should note that this dissimilarity index value is not a reliable data point due to small population size.
- According to the Theil's H-Index, neighborhood racial segregation in Los Gatos increased between 2010 and 2020. Neighborhood income segregation stayed about the same between 2010 and 2015.
- Above Moderate-income residents are the most segregated compared to other income groups in Los Gatos. Above Moderate-income residents live in neighborhoods where they are less likely to encounter residents of other income groups.
- Among all income groups, the Above Moderate-income population's segregation measure has changed the most over time, becoming less segregated from other income groups between 2010 and 2015.
- According to the dissimilarity index, segregation between lower-income residents and residents who are not lower-income has increased between 2010 and 2015. In 2015, the income segregation in Los Gatos between lower-income residents and other residents was higher than the average value for Bay Area jurisdictions.

4.2 Segregation Between Town of Los Gatos and Other jurisdictions in the Bay Area Region

- Los Gatos has a higher share of white residents than other jurisdictions in the Bay Area as a whole, a lower share of Latinx residents, a lower share of Black residents, and a lower share of Asian/Pacific Islander residents.

¹⁶ The analysis conducted for this report suggests that dissimilarity index values are unreliable for a population group if that group represents approximately less than 5% of the jurisdiction's total population. ABAG/MTC recommends that when cities have population groups that are less than 5% of the jurisdiction's population (see Table 15 in Appendix 2), jurisdiction staff could focus on the isolation index or Thiel's H-Index to gain a more accurate understanding of neighborhood-level racial segregation in their jurisdiction.



- Regarding income groups, Los Gatos has a lower share of very low-income residents than other jurisdictions in the Bay Area as a whole, a lower share of low-income residents, a lower share of moderate-income residents, and a higher share of above moderate-income residents.



5 APPENDIX 2: SEGREGATION DATA

Appendix 2 combines tabular data presented throughout this report into a more condensed format. This data compilation is intended to enable local jurisdiction staff and their consultants to easily reference this data and re-use the data in the Housing Element or other relevant documents/analyses.

Table 11 in this appendix combines data from Table 1, Table 2, and Table 3 in the body of the report. Table 12 in this appendix combines data from Table 6, Table 7, and Table 8 in the body of the report. Table 13 represents a duplication of Table 5 in the body of the report; Table 14 represents a duplication of Table 10 in the body of the report; Table 15 in this appendix represents a duplication of Table 4 in the body of the report, while Table 16 represents a duplication of Table 9 in the body of the report.

Table 11: Neighborhood Racial Segregation Levels in Los Gatos

Index	Race	Los Gatos			Bay Area Average
		2000	2010	2020	2020
Isolation	Asian/Pacific Islander	0.079	0.118	0.197	0.245
	Black/African American	0.009	0.012	0.022	0.053
	Latinx	0.059	0.082	0.104	0.251
	White	0.838	0.774	0.663	0.491
Dissimilarity	Asian/Pacific Islander vs. White	0.106	0.145	0.182	0.185
	Black/African American vs. White	0.223*	0.246*	0.369*	0.244
	Latinx vs. White	0.119	0.143	0.179	0.207
	People of Color vs. White	0.093	0.124	0.157	0.168
Theil's H Multi-racial	All	0.011	0.015	0.023	0.042

Universe: Population.

Source: IPUMS National Historical Geographic Information System (NHGIS). U.S. Census Bureau, 2020 Census State Redistricting Data (Public Law 94-171) Summary File, 2020 Census of Population and Housing, Table P002. Data from 2010 is from U.S. Census Bureau, 2010 Census of Population and Housing, Table P4. Data for 2000 is standardized to 2010 census tract geographies and is from U.S. Census Bureau, Census 2000, Table P004.

Note: If a number is marked with an asterisk (*), it indicates that the index is based on a racial group making up less than 5 percent of the jurisdiction population, leading to unreliable numbers.

Table 12: Neighborhood Income Segregation Levels in Los Gatos

		Los Gatos		Bay Area Average
Index	Income Group	2010	2015	2015
Isolation	Very Low-Income (<50% AMI)	0.125	0.162	0.269
	Low-Income (50%-80% AMI)	0.067	0.115	0.145
	Moderate-Income (80%-120% AMI)	0.135	0.166	0.183
	Above Moderate-Income (>120% AMI)	0.728	0.619	0.507
Dissimilarity	Below 80% AMI vs. Above 80% AMI	0.142	0.226	0.198
	Below 50% AMI vs. Above 120% AMI	0.194	0.234	0.253
Theil's H Multi-racial	All	0.030	0.028	0.043

Universe: Population.

Source: Income data for 2015 is from U.S. Department of Housing and Urban Development, American Community Survey 5-Year 2011-2015 Low- and Moderate-Income Summary Data. Data for 2010 is from U.S. Department of Housing and Urban Development, American Community Survey 5-Year 2006-2010 Low- and Moderate-Income Summary Data.

Table 13: Regional Racial Segregation Measures

Index	Group	2010	2020
Isolation Index Regional Level	Asian/Pacific Islander	0.317	0.378
	Black/African American	0.144	0.118
	Latinx	0.283	0.291
	White	0.496	0.429
	People of Color	0.629	0.682
Dissimilarity Index Regional Level	Asian/Pacific Islander vs. White	0.384	0.369
	Black/African American vs. White	0.475	0.459
	Latinx vs. White	0.301	0.297
	People of Color vs. White	0.296	0.293
Theil's H Multi-racial	All Racial Groups	0.103	0.097

Universe: Population.

Source: IPUMS National Historical Geographic Information System (NHGIS). U.S. Census Bureau, 2020 Census State Redistricting Data (Public Law 94-171) Summary File, 2020 Census of Population and Housing, Table P002. Data from 2010 is from U.S. Census Bureau, 2010 Census of Population and Housing, Table P4.

Table 14: Regional Income Segregation Measures

Index	Group	2010	2015
Isolation Index Regional Level	Very Low-Income (<50% AMI)	0.277	0.315
	Low-Income (50%-80% AMI)	0.157	0.154
	Moderate-Income (80%-120% AMI)	0.185	0.180
	Above Moderate-Income (>120% AMI)	0.467	0.435
Dissimilarity Index Regional Level	Below 80% AMI vs. Above 80% AMI	0.186	0.194
	Below 50% AMI vs. Above 120% AMI	0.238	0.248
Theil's H Multi-income	All Income Groups	0.034	0.032

Universe: Population.

Source: Data for 2015 is from U.S. Department of Housing and Urban Development, American Community Survey 5-Year 2011-2015 Low- and Moderate-Income Summary Data. Data for 2010 is from U.S. Department of Housing and Urban Development, American Community Survey 5-Year 2006-2010 Low- and Moderate-Income Summary Data.



ASSOCIATION OF BAY AREA GOVERNMENTS
METROPOLITAN TRANSPORTATION COMMISSION



Technical Assistance
for Local Planning
HOUSING

Table 15: Population by Racial Group, Los Gatos and the Region

Race	Los Gatos			Bay Area
	2000	2010	2020	2020
Asian/Pacific Islander	7.55%	10.95%	18.28%	35.8%
Black/African American	0.76%	0.86%	0.89%	5.6%
Latinx	5.21%	7.21%	9%	28.2%
Other or Multiple Races	3.16%	3.95%	6.55%	24.4%
White	83.31%	77.03%	65.29%	5.9%

Universe: Population.

Source: IPUMS National Historical Geographic Information System (NHGIS). U.S. Census Bureau, 2020 Census State Redistricting Data (Public Law 94-171) Summary File, 2020 Census of Population and Housing, Table P002. Data from 2010 is from U.S. Census Bureau, 2010 Census of Population and Housing, Table P4. Data for 2000 is standardized to 2010 census tract geographies and is from U.S. Census Bureau, Census 2000, Table P004.

Table 16: Population by Income Group, Los Gatos and the Region

Income Group	Los Gatos		Bay Area
	2010	2015	2015
Very Low-Income (<50% AMI)	10.83%	14.29%	28.7%
Low-Income (50%-80% AMI)	6.56%	10.57%	14.3%
Moderate-Income (80%-120% AMI)	11%	16.34%	17.6%
Above Moderate-Income (>120% AMI)	71.62%	58.8%	39.4%

Universe: Population.

Source: Data for 2015 is from U.S. Department of Housing and Urban Development, American Community Survey 5-Year 2011-2015 Low- and Moderate-Income Summary Data. Data for 2010 is from U.S. Department of Housing and Urban Development, American Community Survey 5-Year 2006-2010 Low- and Moderate-Income Summary Data.



ASSOCIATION OF BAY AREA GOVERNMENTS
METROPOLITAN TRANSPORTATION COMMISSION



Technical Assistance
for Local Planning
HOUSING

6 REFERENCES

- Ananat, Elizabeth Oltmans. 2011. "The wrong side(s) of the tracks: The causal effects of racial segregation on urban poverty and inequality," *American Economic Journal: Applied Economics* 3: 34-66.
- Bayer, Patrick, Robert McMillan, and Kim S. Rueben. 2004. "What Drives Racial Segregation? New Evidence using Census Microdata," *Journal of Urban Economics* 56(3): 514-535.
- Burch, Traci. 2014. "The Old Jim Crow: Racial Residential Segregation and Imprisonment," *Law and Policy* 36(3): 223-255.
- Chetty, Raj and Nathaniel Hendren. 2018. "The Impacts of Neighborhoods on Intergenerational Mobility I: Childhood Exposure Effects," *The Quarterly Journal of Economics* 133(3):1107-1162
- Cutler, David M., and Edward L. Glaeser. 1997. "Are ghettos good or bad?," *The Quarterly Journal of Economics* 112(3): 827-72.
- Lens, Michael and Paavo Monkkonen. 2016. "Do Strict Land Use Regulations Make Metropolitan Areas More Segregated by Income?," *Journal of the American Planning Association* 82(1): 6-21.
- Pendall, Rolf. 2000. "Local Land-Use Regulation and the Chain of Exclusion," *Journal of the American Planning Association* 66(2): 125-142.
- Rothstein, Richard. 2017. *The Color of Law: A Forgotten History of how our Government Segregated America*. New York: Liveright Publishing.
- Sampson, Robert J. 2012. *Great American city: Chicago and the enduring neighborhood effect*. Chicago: University of Chicago Press.
- Sharkey, Patrick. 2013. *Stuck in place: Urban neighborhoods and the end of progress toward racial equality*. Chicago: University of Chicago Press.
- Trounstein, Jessica. 2015. "Segregation and Inequality in Public Goods," *American Journal of Political Science* 60(3): 709-725.
- Trounstein, Jessica. 2018. *Segregation by Design: Local Politics and Inequality in American Cities*. New York: Cambridge University Press.