

ATWAL  
RESIDENCE

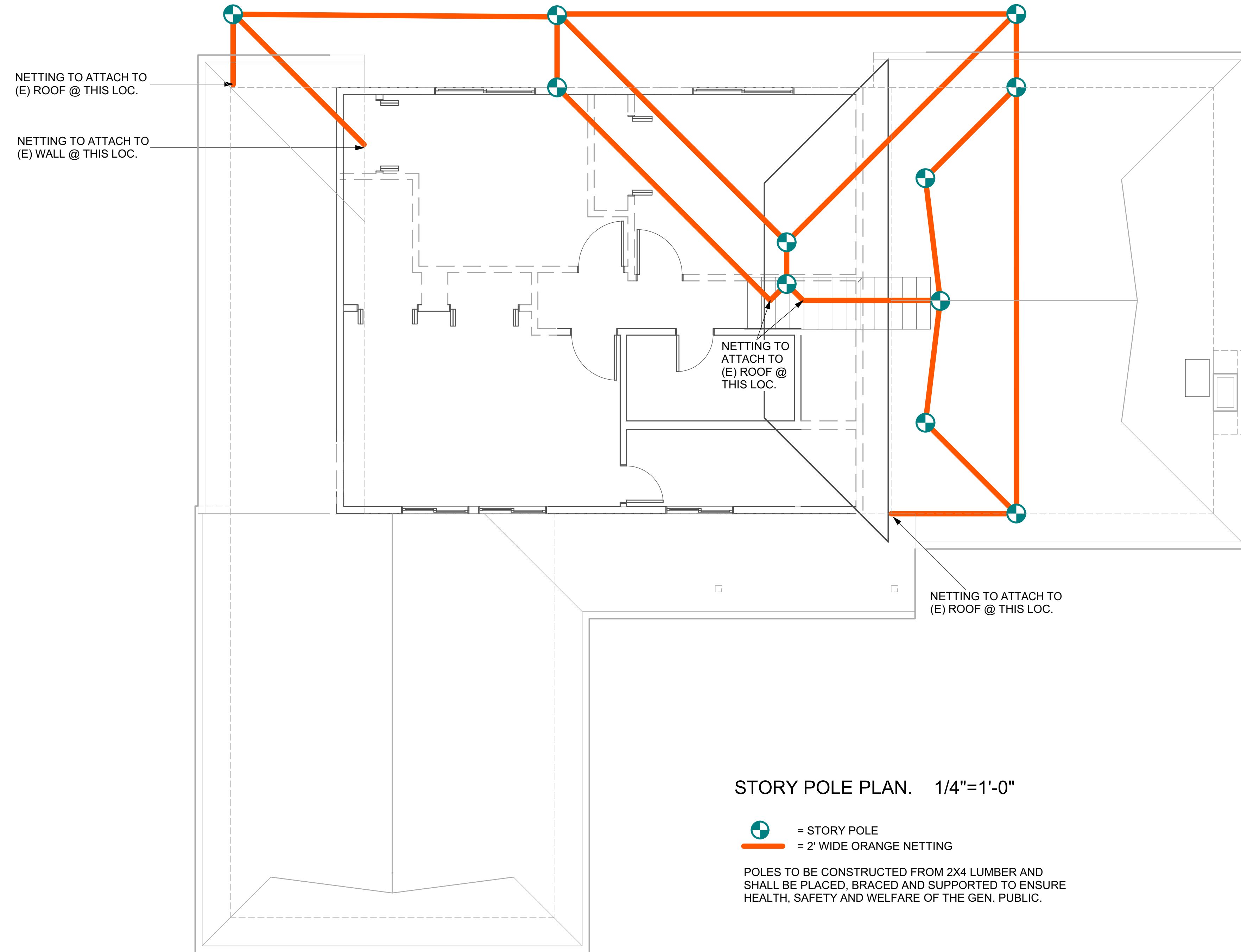
113 ALBERT CT., LOS  
GATOS CA. 95032

DO NOT SCALE PLANS  
SCALE REFLECTS  
DRAWINGS PRINTED ON  
ARCH D 24x36 SIZE SHEETS

Story Pole - Plan

NOT FOR CONSTRUCTION

MARCH 10, 2021



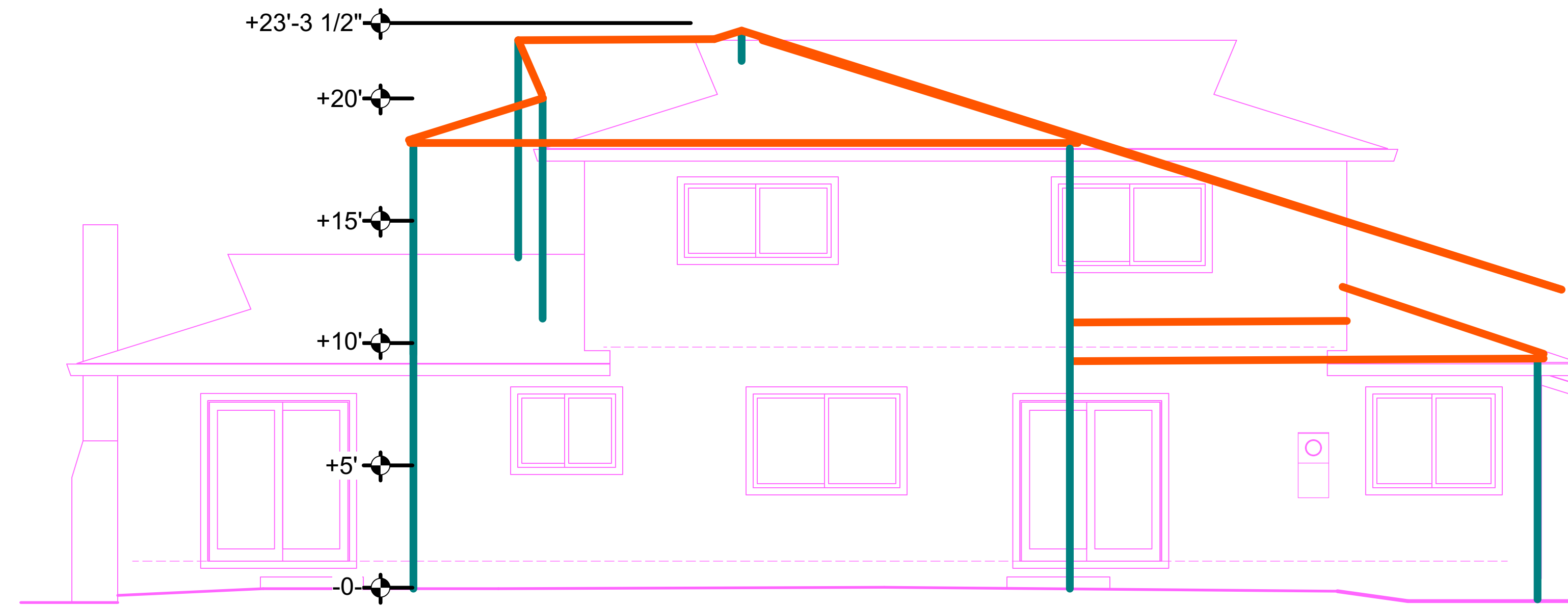
J. KRETSCHMER ARCHITECT

101 OLD BLOSSOM HILL ROAD  
LOS GATOS, CA 95032  
(408) 221-0771

MEMBER AMERICAN INSTITUTE OF ARCHITECTS

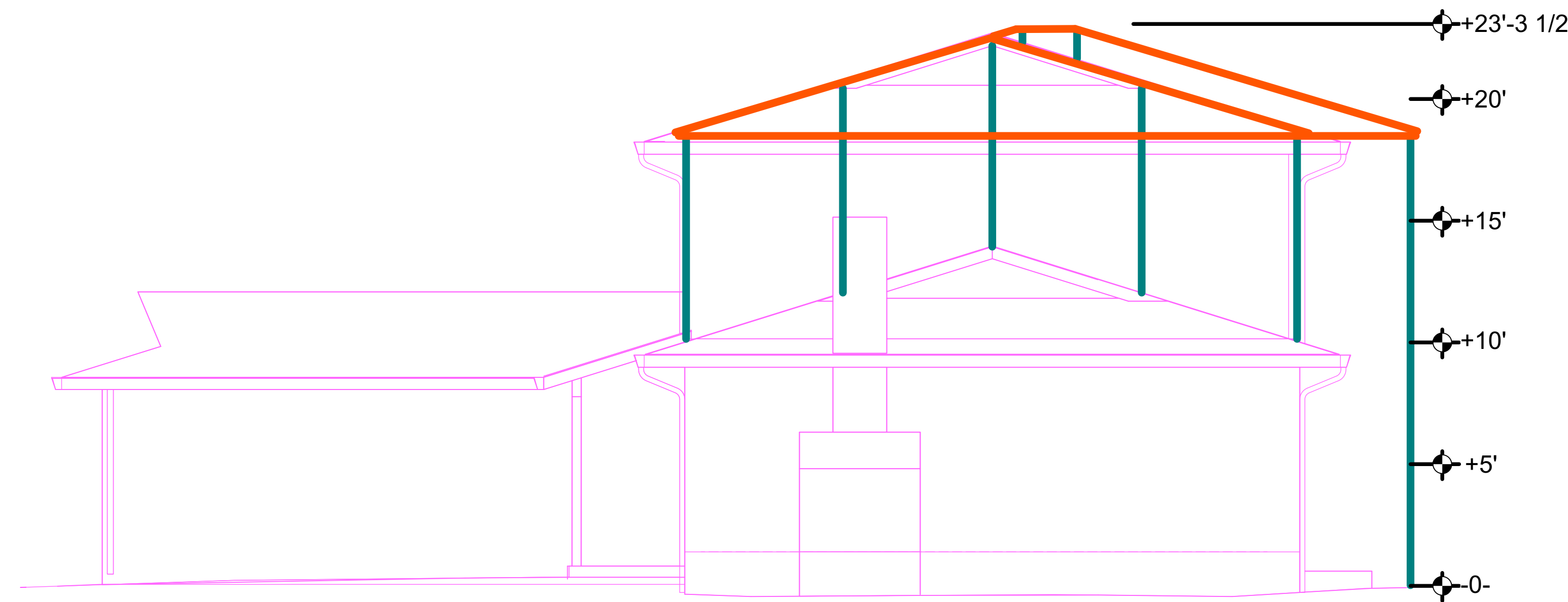
COPYRIGHT 2020 JENNIFER KRETSCHMER, AIA  
J. KRETSCHMER, ARCHITECT, AIA drawings, specifications, and other documents, including those in electronic or digital form, shall remain the property of the Architect. Use is restricted to the site for which they were prepared and for the purpose of constructing, using and maintaining this project. Any other use, including copying, reproduction, distribution, or disclosure, without the written consent of the Architect.

NOT FOR CONSTRUCTION



NORTH STORY POLE ELEV. 1/4"=1'-0"

- = EXISTING HOUSE ELEVATION
- = STORY POLE
- = 2' WIDE ORANGE NETTING



EAST STORY POLE ELEV. 1/4"=1'-0"

- = EXISTING HOUSE ELEVATION
- = STORY POLE
- = 2' WIDE ORANGE NETTING

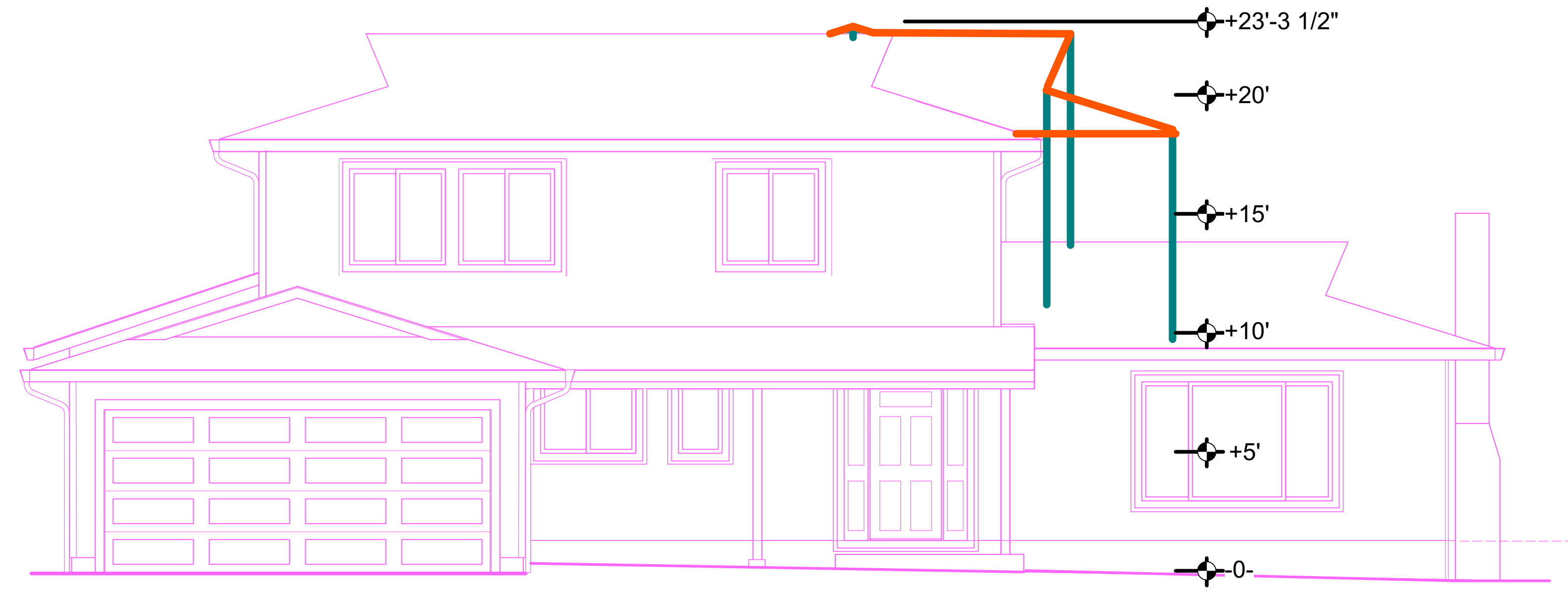
NOTES:  
1. PROVIDE 5' MEASUREMENT ON AT LEAST ONE OF THE POLES ON EACH ELEVATION.  
2. MATERIALS ARE TO BE:  
-NETTING: 24" WIDE PLASTIC ORANGE MESH (SNOW FENCING).  
-POLES: 2X4 LUMBER OR METAL POLES.

J. KRETSCHMER ARCHITECT  
101 OLD BLOSSOM HILL ROAD  
LOS GATOS, CA 95032  
(408) 221-0771

MEMBER AMERICAN INSTITUTE OF ARCHITECTS

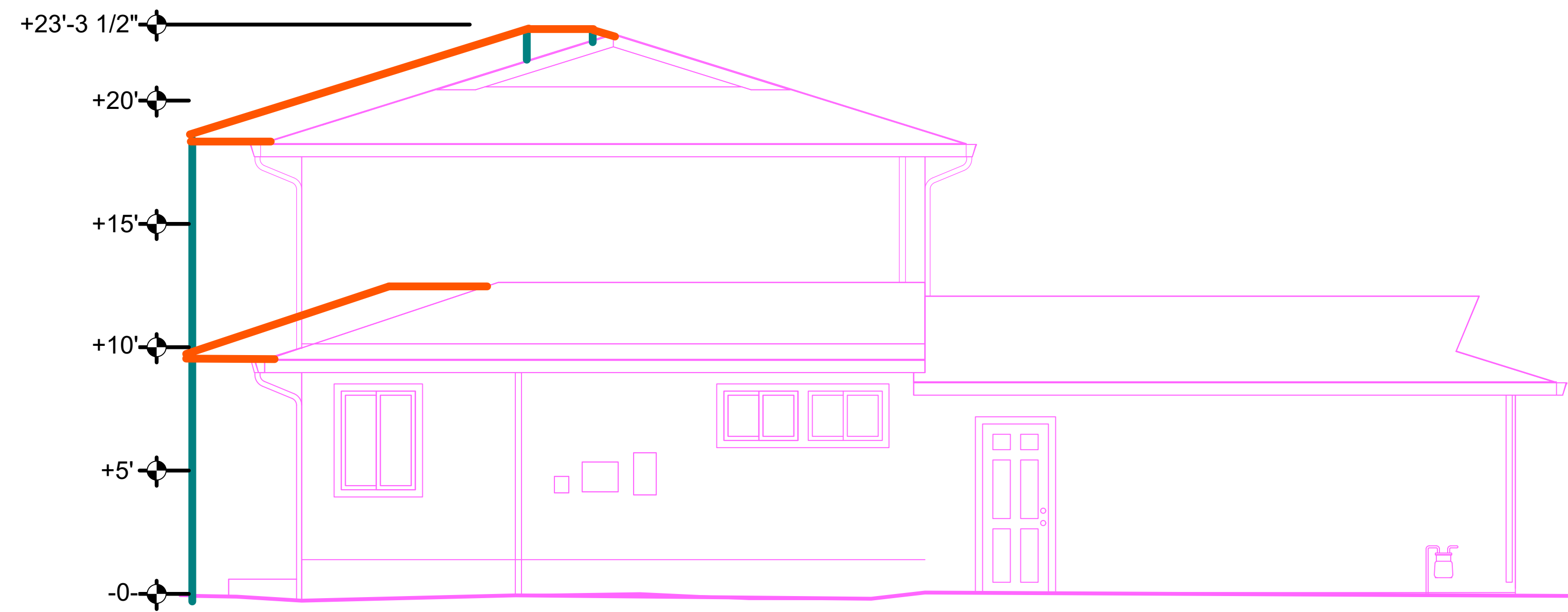
COPYRIGHT 2020 JENNIFER KRETSCHMER, AIA  
J. KRETSCHMER, ARCHITECT, AIA drawings, specifications, and other documents, including those in electronic or digital form, shall remain the property of the Architect. Use is restricted to the site for which they were prepared and for the purpose of constructing, using and maintaining this project. Any other use, including copying, reproduction, distribution, or disclosure without the written consent of the Architect.

**NOT FOR CONSTRUCTION**



SOUTH STORY POLE ELEV. 1/4"=1'-0"

- = EXISTING HOUSE ELEVATION
- = STORY POLE
- = 2' WIDE ORANGE NETTING



WEST STORY POLE ELEV. 1/4"=1'-0"

- = EXISTING HOUSE ELEVATION
- = STORY POLE
- = 2' WIDE ORANGE NETTING

- NOTES:
1. PROVIDE 5' MEASUREMENT ON AT LEAST ONE OF THE POLES ON EACH ELEVATION.
  2. MATERIALS ARE TO BE:
    - NETTING: 24" WIDE PLASTIC ORANGE MESH (SNOW FENCING).
    - POLES: 2X4 LUMBER OR METAL POLES.